



# MES<sup>TM</sup>

MARINE EQUIPMENT SOLUTIONS



**VERSATILE AND INNOVATIVE SOLUTIONS FOR  
MARINE AND CONSTRUCTION PROJECTS**

# RENTAL. SALES. CUSTOM FABRICATION.



## PRODUCT LINES

- Sectional Barges 4', 5', 7', 10'
- Barge Rakes and Ramps
- Winches (Diesel Mechanical, Hydraulic, Pneumatic)
- Fairleads
- Deckleads
- Anchors
- Hydraulic Power Units
- Wire Rope, Synthetic Ropes and Slings, Rigging Hardware
- Spuds and Pockets
- Fender and Fender Systems
- Custom Fabrication
- Cofferdams
- Portable Containment
- Water Diversion
- Marine Bearings
- Searchlights
- Cargo Hardware
- Navigation Lighting
- Portable Pumps





**MES**<sup>™</sup>  
MARINE EQUIPMENT SOLUTIONS

## Your Trusted Partner in Marine and Construction Equipment

Marine Equipment Solutions (MES) unites some of the most respected names in the marine and heavy construction industry, Rasmussen, Poseidon, Pacific Gulf Wire Rope, Portadam, Poseidon Jackup, and Humco Marine Products, under one trusted brand. By bringing these proven companies together, MES delivers a single, comprehensive source for equipment, engineering, and project support across North America. Our integrated capabilities eliminate the need to coordinate multiple vendors, allowing clients to access complete solutions through one point of contact.

### Comprehensive Equipment & Services

- **Sectional Barges & Platforms (Rasmussen and Poseidon):** Rasmussen Equipment and Poseidon Barge together deliver the most comprehensive, scalable, and reliable marine equipment solutions in North America. From engineered winch systems and mooring packages to new sectional barges and nationwide rental support, our combined capabilities empower contractors to execute complex marine and civil construction projects with confidence, efficiency, and speed.
- **Winches, Rigging & Mooring (Rasmussen and Pacific Gulf Wire Rope):** The leading provider of specialized marine construction equipment rentals, offering the industry's most extensive fleet of winches—hydraulic, diesel mechanical, pneumatic (air), electric, and manual—available in multiple drum configurations. Backed by a deep inventory of sectional barges and complete engineered mooring solutions plus a vast selection of wire rope, rigging hardware, and custom slings.
- **Rigging & Lifting (Rasmussen and Pacific Gulf Wire Rope):** Rasmussen and Pacific Gulf Wire Rope have over 125 years of combined expertise in wire rope, chain slings, synthetic rope, web slings, shackles, hooks, snatch blocks, and cargo hardware. Services include a 1.2 million lb. test bed, non-destructive testing, on-site socket pours, inspections, spooling, and 24/7 emergency response.
- **Cofferdam & Water Diversion (Portadam):** A proven alternative to sheet piling with over 6,000 successful projects worldwide. Flexible, freestanding, rapid deployment cofferdam systems minimize environmental impact, subsurface risk, and dewatering needs. Ideal for bridges, dams, remediation, and shoreline stabilization.
- **Jackup Platforms (Poseidon Jackup):** Poseidon Jackup, a joint venture of Poseidon Barge (U.S.) and Combifloat Systems (Netherlands) with support from Marine Equipment Solutions, brings modular jackup technology to North America with Jones Act-compliant solutions. Built, owned, and operated in the United States, we combine global engineering and U.S. manufacturing to deliver stable, versatile elevated platforms.
- Currently offering the MES-C7—the go-to solution for ports, terminals, jetties, breakwaters, bridges, pipelines, and offshore facilities. With **440 US tons variable deck load, 3,070 lbs/ft<sup>2</sup> deck strength, and a 5,600 ft<sup>2</sup> open deck**, the MES-C7 delivers strength, flexibility, and performance where it matters most.
- **Marine Supplies & Equipment Distribution (Humco Marine Products):** Humco brings broad product distribution of marine bearings, workboat equipment, lighting, safety gear, deck hardware, cable, and more. With deep inventory, decades of industry experience (since 1966), and national reach across inland waterways and western river systems, Humco strengthens MES's capabilities to serve vessel operators and marine contractors.

### Engineering, Fabrication & Support

Beyond rentals and sales, MES provides in-house engineering, R&D, and custom fabrication across all business lines. Our facilities—including a 140,000 sq. ft. ISO-certified fabrication plant ensure projects receive tailored, innovative solutions delivered with uncompromising quality.

### Why MES

Partnering with MES brings immeasurable value to your projects by delivering:

- A team that serves as an extension of your own
- Solutions designed to lower costs and shorten timelines
- National reach with regional responsiveness
- Trusted brands working together for your success
- Single source access to products and services

**One brand, one mission-Marine Equipment Solutions**



### Rental Solutions for All Marine Construction Needs

Rasmussen Equipment is the leading provider of specialized marine construction equipment rentals, offering a deep inventory of winch systems, sectional barges, engineered mooring solutions, anchors, buoys, fenders, wire rope, rigging, and turnkey project support. Our mission is simple: deliver the right equipment, at the right time, with the engineering expertise to ensure safe and successful operations.

### Nationwide Footprint for Rapid Deployment

With four major hubs in:

- Seattle, WA
- Belle Chasse, LA
- Berne, IN
- Williamstown, NJ

And additional yards in:

- St. Louis, MO
- Coeymans, NY
- Liverpool, TX
- Rio Vista, CA
- Plain, WI
- Cocoa, FL
- Mt. Airy, NC

We maintain the most strategically distributed networks in the industry. This footprint reduces freight costs and enables 1–2 business day delivery for most projects across the United States.

### Marine Construction Solutions for North America

Rasmussen Equipment and Poseidon Barge deliver North America's most comprehensive, scalable, and reliable marine equipment solutions. From engineered winch systems and mooring packages to new sectional barges and nationwide rental support, our combined capabilities help contractors complete complex marine and civil construction projects with confidence, efficiency, and speed.

## Introducing the MES 50

We partnered with Timberland Equipment Limited to design the MES 50. It brings the proven functionality of a friction winch into a new era that is hydraulically driven and with precision controls. Designed to deliver the same trusted strength and durability of traditional friction units, the MES 50 enhances performance through modern hydraulic technology offering greater safety, efficiency, and reliability on every project.



- Anchor Line Mooring and Spud Lifting/Lowering
- Adjustable Speed and Pull From 25,000 – 50,000 Lbs.
- Wire Rope Capacity Up To 3,300ft
- Wire Rope Diameter 7/8" – 1-1/4"
- All Features Hydraulically Driven and Joystick Controlled
- Band Brake
- Jaw Clutch (For Freewheeling)
- Locking Dog
- Modular Design
- Diesel or Electric Hpu Available



### Complete full mooring solutions including:

- Fairleads and Deckleads, 300+ in stock
- Single and Multi-Sheave Blocks, 75+ in stock
- Fenders, 50+ in stock
- Buoys, 150+ in stock
- Anchors (Delta Flipper, Workboat, Danforth, and Stockless), 150+ in stock
- Anchor Chain and Rigging Hardware

### A Single-Source Rental Partner

Rasmussen simplifies project planning by bundling equipment, accessories, and engineering support into one integrated solution. All items can be packaged, shipped, and invoiced together—reducing administrative burden and accelerating mobilization.

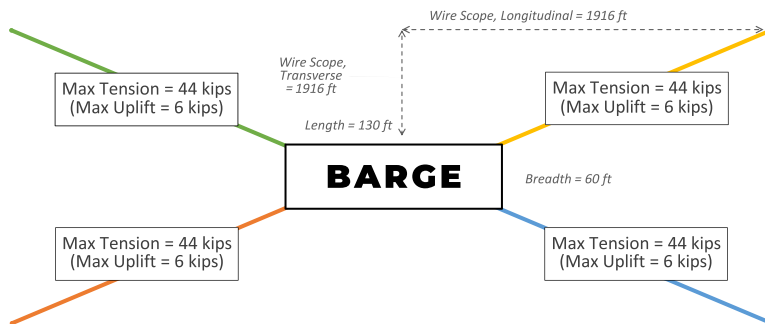
## Extensive Selection of Wire Rope and Rigging Equipment

- Custom slings for small and large lifting projects.
- Extensive inventory of wire rope, chain, rope, and cordage.
- We spool your purchased wire rope on our rental winches, so they show up ready to work!

Rasmussen is the leading stocking distributor of **Smith Berger Marine** as well as **Pullmaster** and **LANTEC** models of **TWG winches**, offering industry-trusted products for demanding marine applications. Additionally, we offer Tier 4 and CARB-compliant HPU's and Winches designed for reliable performance in the most demanding marine environments.



### 4-POINT MOORING PLAN



## Mooring System Plan Analysis

Utilizing our mooring calculator (backed by Glostren) we can assist with determining the right holding power needed to keep your barge or vessel in position.



### New Sectional Barge Sales & Engineering Expertise

Poseidon Barge is a premier manufacturer of new sectional barges, serving marine contractors, bridge builders, dredging companies, and heavy civil firms across North America. Our barges are engineered for durability, modularity, and ease of transport, making them ideal for both inland and coastal applications.

### ISO-Certified Manufacturing Excellence

All new Poseidon barges are built in our ISO 9001-certified, 140,000 sq. ft. fabrication facility, ensuring consistent quality, traceability, and performance. Our manufacturing process emphasizes structural integrity, corrosion resistance, and long-term reliability.

Customers purchasing Poseidon equipment benefit from application engineering support at no additional charge in most cases, including:

- An extensive inventory of sectional barge models with accessories and willingness to customize for the application or customers wants/ needs, even custom fabrication work outside of our normal product line up.
- The highest production capacity in the industry, with a focus on continuous improvement through welder training programs and strategic implementation of automated fabrication processes.
- All new Poseidon equipment carries a 1 YEAR WARRANTY against workmanship defects.

This ensures every project begins with the right platform and the right technical foundation.

### Seamless Integration with Rasmussen Rentals

For short-term needs or supplemental capacity, Poseidon customers can access Rasmussen's nationwide rental fleet. This synergy reduces freight costs, accelerates delivery, and provides unmatched flexibility for contractors managing fluctuating project demands.

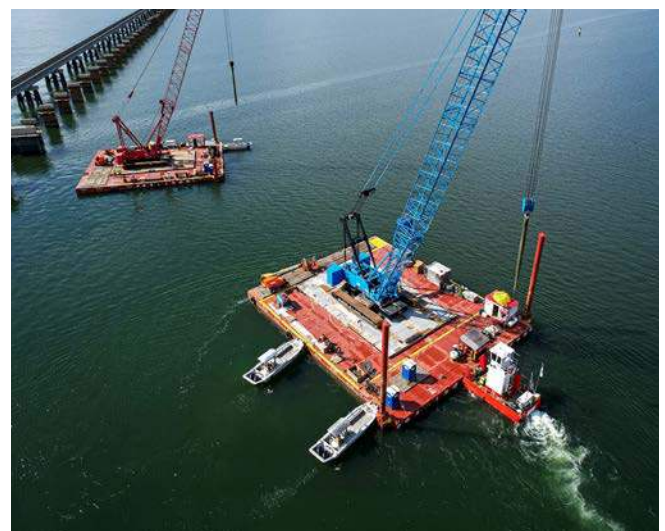
### Industries We Serve

**Our combined capabilities support a wide range of demanding sectors, including:**

- Marine & Civil Construction
- Dredging
- Bridge & Infrastructure Projects
- Dam & Waterway Construction
- Environmental Remediation
- Logging & Marine Transportation
- Commercial Fishing & Industrial Marine Operations

### Why Contractors Choose Rasmussen & Poseidon

- Nationwide reach with regional inventory
- Fast delivery—often within 1–2 business days
- The largest sectional barge fleet in North America
- Engineered mooring and winch solutions for complex sites
- ISO-certified barge manufacturing
- Application engineering support included
- Streamlined packaging, shipping, and invoicing
- Trusted by top marine and civil contractors nationwide





## Sectional Barges and Connections

### Sectional Barges:

- 4', 5', 7', 10'

### Connection Types:

- P1 Series Connector
- P2 Series Connector
- P3 Series Connector

Market Compatible with Flexifloat, Shugart, and Rendrag





# PORTADAM<sup>®</sup>

AN MES COMPANY

For over five decades, Portadam has been utilized as an effective means of temporary cofferdam and water storage. Our proprietary system has been used in over 6,000 water-related projects both nationally and internationally. The Portadam system has minimal environmental impact due to its freestanding nature. Additionally, no ground penetration is typically required, thereby minimizing subsurface risk (environmental, cost, and schedule) usually associated with sheet piling. An added benefit is that dewatering of excavated material is minimized.

#### Key Advantages over other methods are:

- Cofferdam rental solutions including installation by our expert certified divers
- Consultation & budgetary pricing
- Remote and in-water site surveys
- Flexible design allows custom layout
- Can be used in flowing waters
- Leaves subsurface undisturbed
- Quicker, less manpower, and equipment for setup/removal than sandbags
- Minimizes dewatering of excavated material
- System heights including 5', 7', 10', & 12'



**Types of projects in which we have extensive experience include:**

- Water Containment for Environmental Remediation, Oil/Gas and Treatment
- Boat Ramps
- Bridges
- Canals
- Dams
- Environmental Remediation
- Pipeline Crossings
- Sheet Pile Wraps
- Shoreline Restoration/Stabilization
- Temporary Water Storage





# PACIFIC GULF

## WIRE ROPE

AN MES COMPANY

For more than 35 years, Pacific Gulf Wire Rope has been a leader in the wire rope and rigging industry. Our success is clearly based on long term relationships with our customers, commitment to provide high quality products, along with offering the maximum in safety, service, and cost-efficiency to every customer. Our dedication to service and competitive pricing are the direct result of these long term relationships. Our longevity is a testament of our commitment to our customers.



### Products:

- Wire Rope (Up to 4")
- Chain Slings
- Nylon & Polyester Web Slings
- Polyround Slings
- Synthetic Ropes
- Nylon & Manila
- Polypro & Polydac
- Shackles
- Clips
- Snatch Blocks
- Hooks
- Turnbuckles
- Latches
- Cargo Hardware
- Chain
- S/S Fittings

### Services:

- On Site Spelter Socket Pour
- 1.2 Million LB Test Bed
- 60K/200K Vertical Test Bed
- Pad Eye Testing
- NDT Testing
- Visual Inspections
- Load Cell Rentals
- Water Bag Rentals
- Spooling Machine Rental
- 24/7 Emergency Service





**Wire Rope:**

New/Retest  
Bright  
Drawn Galv.  
Cable Laid  
Stainless Steel  
Multiple Legs  
Certified & Tagged  
3, 6, 8 & 9 Part

**Chain Slings:**

New/Retest  
Alloy Grade 100  
Multi-legged  
Certified & Tagged

**Nylon & Polyester  
Web Slings:**

1" to 12"  
1 ply to 4 ply  
Grommet/Endless

**Polyround Slings:**

1 Ton to 350 Tons

**Synthetic Ropes:**

3 Strand  
8-Braid/ 12 Strand  
Double Braid  
Polyester/Dyneema

**Nylon & Manila  
Polypro & Polydac**

**Shackles:**

Galv.  
Alloy  
Screw Pin  
Bolt Type  
Commercial  
Towing  
Wide Body  
ROV

**Clips:**

D.F. Type  
Malleable  
Fist Grip

**Snatch Blocks:**

Single  
Double  
3/8"-1-1/4" Wire Line  
With Hooks  
With Shackles  
Overhaul Ball  
Terminator Wedge Socket

**Hooks:**

Alloy Eye Hook 1 Ton-60  
Ton  
Clevis Grab  
Sling Hooks  
Eye Hooks  
Swivel Hooks  
Sorting Hooks  
Shur-loc Safety Hooks  
ROV Hooks

**Turnbuckles:**

1/4"- 2-3/4"

**Latches:**

SS-4055  
S-4320  
J-Latch  
PL/PLN Latch  
BTC-Campbell

**Cargo Hardware:**

Polyester Tie-down  
with Ratchets  
Lever Load Binders  
Ratchet Load Binders  
Steamboat Ratchets  
Boomer Chains

**Chain:**

G-30 Proof Coil Galv.  
G-40 High Test  
G-70 Transport  
G-100 Alloy  
Stainless Steel  
Galv. Long Link  
Barge Chain

**S/S Fittings:**

Shackles  
Clips  
Thimbles  
Turnbuckles  
Chain

**Misc:**

Eye Bolts  
Links  
Socketfast  
Swivels  
Plate Clamps  
Chain Hoist  
Lever Hoist  
Quick Links  
Wire Cutters  
Pull Grips  
Wire Rope Lube  
Cotter Keys  
Steamboat Ratchets



**CAMPBELL**  
CHAIN & FITTINGS



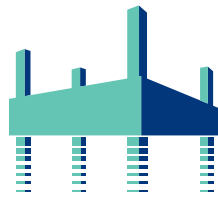
**ELEPHANT**  
LIFTING PRODUCTS



**SKOOKUM**  
Guaranteed Tough Since 1890

**GUNNEBO JOHNSON**  
CORPORATION





# POSEIDON JACKUP

AN MES COMPANY

Poseidon Jackup, is a joint venture between Combifloat Systems B.V. of the Netherlands and Poseidon Barge of the United States, with the backing of Marine Equipment Solutions.

This landmark partnership brings proven modular jackup technology to North America, offering Jones Act-compliant solutions tailored to the needs of U.S. and Canadian marine contractors.

With Combifloat's global engineering expertise and Poseidon's U.S. manufacturing strength, Poseidon Jackup sets a new standard in marine construction. Now offering unmatched stability and versatility for projects ranging from bridge building to energy and environmental work. Our elevated platform solutions are proudly built, owned, and operated in the United States, ensuring both performance and compliance from day one.

## MES-C7

Offering a 440 US ton variable deck load capacity and an unparalleled 3,070 lb/ft<sup>2</sup> deck strength, the MES-C7 is the platform of choice for heavy duty marine construction works. It provides a large 5,600 ft<sup>2</sup> free deck space. Without obstructions on deck, the deck layout can be fully tailored to client's mission equipment and operating method. Depending on soil penetration and waves, the platform can operate in water depths up to 100 ft, with increases possible in moderate environment.

Safe and efficient lifting, lowering, and (re)positioning of the platform is enabled through the central or local controlled jacking system and 4-point mooring system. Redundancy is provided by two independent hydraulic pump sets and manual control of crucial platform functions.



## Maximizing Workability

With highly qualified and specialized in-house engineers, Poseidon Jackup offers various engineering services to guide and support clients on operational and environmental matters when using the platform. Poseidon Jackup engineers are available in all stages of your project, from tendering, project preparation, and throughout the entire execution phase.

## Configuration

The platform consists of a number of standardized floating modules coupled together through a male / female connection system. The platform is supported by four spud legs in heavy duty spud wells. The hydraulic power unit with control cabin on top is located on the platform, with actual location on the platform being flexible.

## Modular Design

All platform components are modular and easily transportable. Due to the modular design, overall dimensions, and spud legs length can be adapted to customer needs.

## Jacking System

The jacking mechanism consists of two hydraulically operated crossheads per spud well, to lock and unlock the spud for vertical movement. Vertical movement is accomplished by four hydraulic heavy duty cylinders with a stroke of 4 ft, working on an operating pressure up to 3,625 PSI. Operational jacking speeds are approximately 8 inches per minute.

The four spud wells are powered by a hydraulic power pack for simultaneously lifting and lowering the spud legs through its seating. The powerpack is built in a 20 ft container approved for the offshore environment.

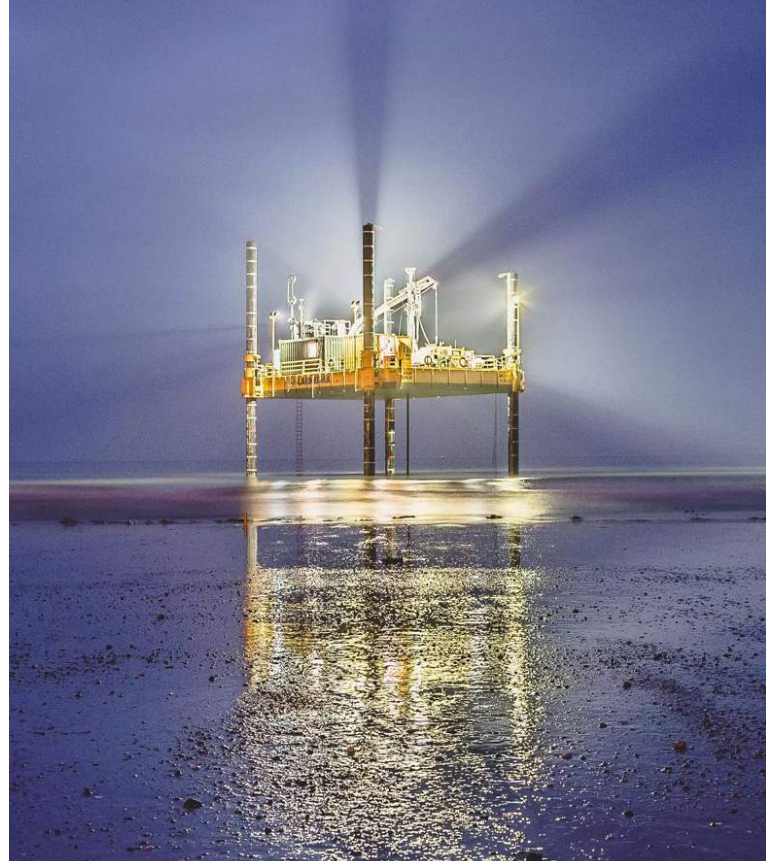
The powerpack consists of two electric driven hydraulic pumps. The double execution also guarantees redundancy in case of emergency. The system is operated from a central control system with complete remote PLC control of the jacking operation. For safety reasons and as back-up, full manual and local control at the spud wells is also possible.

### Optional:

- Spud Cans
- 4-Point Mooring System
- Leg Extensions
- Boat Landing
- Spud Leg Jetting System
- IACS Classification

## MES-C5

The **MES-C5**—the next platform in the lineup—is on the horizon. Engineered for geotechnical and light construction spreads, it delivers a 100-ton variable deck load capacity and  $\sim 3,070$  lb/ft<sup>2</sup> deck strength, making it a go-to solution for teams that demand stability, strength, and flexibility in nearshore and inland environments. More details to come.





# HUMCO

## MARINE PRODUCTS

AN MES COMPANY

## Supplying Quality Products and Service to the Marine Industry Since 1966

For over five decades, Humco Marine Products, Inc. has been a trusted provider of the finest quality marine equipment and customer service. Based in St. Louis, Missouri, Humco has built a reputation for excellence, reliability, and immediate availability maintaining an inventory of more than 100,000 marine products to support vessels and operators across the Inland Waterways and Western Rivers.

Our comprehensive line includes marine bearings, searchlights, winches, deck fittings, safety products, lighting, shipboard cable, and replacement parts for nearly every marine system. With a centralized Midwest location, Humco ensures fast, dependable delivery to customers nationwide.

**Delivering the right parts, at the right time to keep your fleet moving.**

As part of Marine Equipment Solutions (MES), Humco strengthens our national distribution capabilities bringing together decades of product expertise and deep inventory with MES's commitment to engineering, fabrication, and customer support.

### Key Offerings:

- Marine Bearings, Shaft Accessories, and Seals
- Deck Hardware, Winches, and Fittings
- Safety and Environmental Equipment
- Electrical, LED Lighting, and Navigation Lights
- Fenders, Bumpers, and Shaft Components
- Sanitation and Spill Containment Systems



# Comprehensive Marine Product Line

Humco's extensive in-stock inventory supports commercial fleets, repair facilities, and marine contractors with top brands and proven solutions.

## Lighting & Electrical:

- Barge Lights
- LED Deck Lighting
- Navigational Lighting and Searchlights
- Solar Fixtures
- Power Supplies
- Communication Systems

### Featured Manufacturers:

- Carlisle & Finch
- McDermott Lighting
- Perko/Varo
- Empco
- Phoenix Lighting
- Astron
- Blue Sea
- Newmar
- Icom Radios
- Shakespeare
- Standard Horizon
- Marinco/Mastervolt

## Safety & Sanitation:

- Life Jackets
- Flotation Coats
- Man Overboard Lights
- General and Fire Alarms
- Upright Spill Kits

- Overboard Pumps
- Marine MSD's

### Featured Manufacturers:

- ACR
- ALERT2
- Jim Buoy
- Mustang Survival
- Taylortec/Seahorse
- Kent
- Orion
- Kahlenberg Industries
- Federal Signal
- Honeywell/Firelite
- Datrex
- Environmental Marine
- Incinolet
- Sea Horse MSD's
- FAST
- AHEAD Sanitation
- H2O/Owens
- RedFox

## Engine, Deck & Hull Equipment:

- Engine Controls
- Steering
- Doors
- Windows
- Hatches

- Winches
- Deck Hardware

All built to withstand the toughest conditions.

### Featured Manufacturers:

- Racor/Parker
- Kobelt
- Rexroth/Aventics
- Teleflex/Morse
- ZF Mathers
- Maxim Silencers
- FW Murphy
- Vickers Hydraulics
- UMC/Baier
- Cornell Carr
- Kearfott/Singer
- Cen-Tex Marine
- Trico/Sprague
- Texas Wheelworks
- Freeman
- Aurand
- SEW Eurodrive

- Patterson Manufacturing
- Wintech International
- Nabrico/Arcosa
- Jeamar Inc.
- Stearns & Dings

## Fendering & Shaft Systems:

- Anodes
- Marine Cutless and Sleeve Bearings
- Keel Coolers
- Fenders
- Bumpers to Protect Vessels in Demanding Work Environments

### Featured Manufacturers:

- Duramax Marine/Johnson Cutless
- Schuyler Rubber Co.
- RW Fernstrum
- ITW Polymers





Berne, IN  
Plain, WI  
Mt. Airy, NC  
Cocoa, FL

St. Louis, MO  
Coeymans, NY  
Belle Chasse, LA

Geismar, LA  
Golden Meadow, LA  
Houston, TX

Rio Vista, CA  
Seattle, WA  
Williamstown, NJ

# “IT’S WHO WE ARE. IT’S WHAT WE DO.”™

At Marine Equipment Solutions (MES), we are dedicated to providing top-tier equipment and solutions for a diverse range of marine and construction projects. As a family of uniquely specialized firms, MES is committed to delivering excellence across the board through our innovative products and expert services. Together, our companies at Marine Equipment Solutions are here to support your projects with the expertise, innovation, and resources you need to achieve outstanding results.

[MarineEquipmentSolutions.com](http://MarineEquipmentSolutions.com)  [info@MarineEquipmentSolutions.com](mailto:info@MarineEquipmentSolutions.com)

415 S. Cloverdale St., Seattle, WA 98108 | 800-227-7920