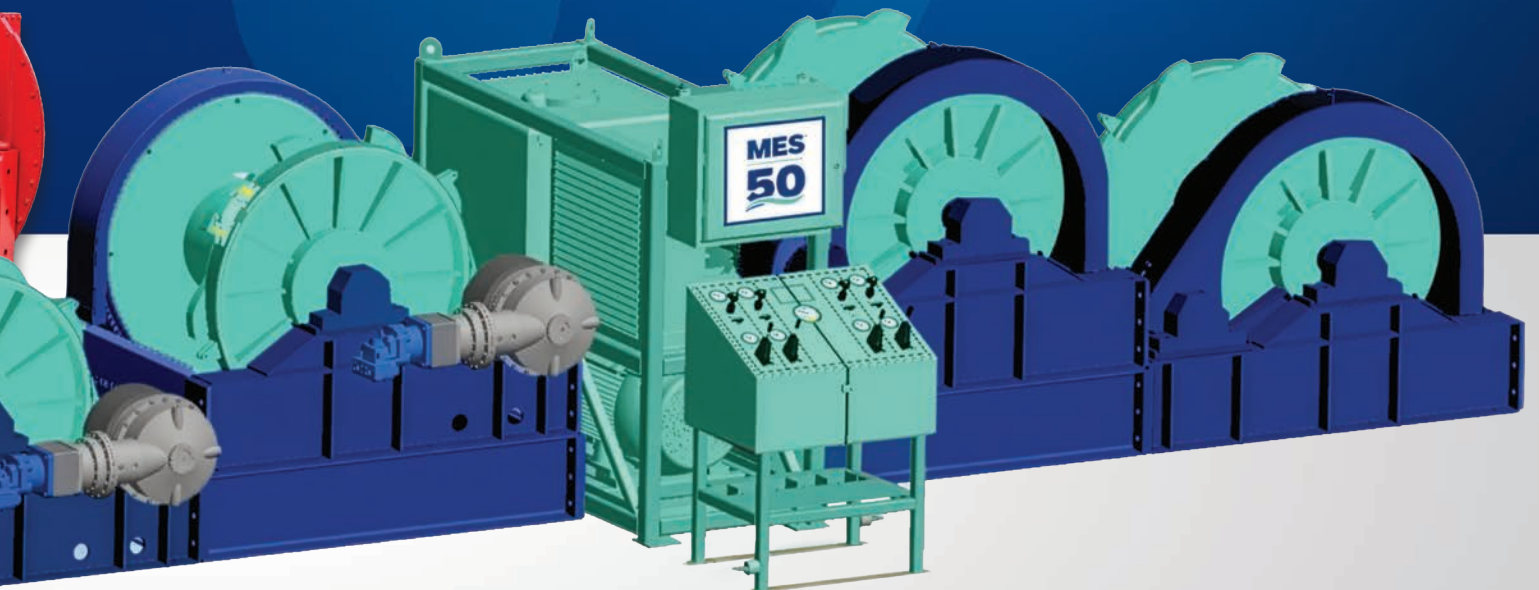




MESTM
MARINE EQUIPMENT SOLUTIONS

RENTAL SOLUTIONS FOR EVERY PROJECT

MarineEquipmentSolutions.com



RENTAL SOLUTIONS FOR ALL MARINE CONSTRUCTION NEEDS

Marine Equipment Solutions (MES) brings together some of the most reputable names in the marine and heavy construction industry, including Rasmussen, Poseidon, Pacific Gulf Wire Rope, Portadam, Poseidon Jackup, and Humco Marine Products. This collaboration creates a trusted brand that offers a comprehensive source for equipment, engineering, and project support across North America. By integrating these proven companies, MES simplifies the process for clients, eliminating the need to coordinate multiple vendors and providing complete solutions through a single point of contact.

Rasmussen Equipment is the leading provider of specialized marine construction equipment rentals. We offer a vast inventory of winch systems, sectional barges, engineered mooring solutions, anchors, buoys, fenders, wire rope, rigging, and turnkey project support. Our mission is straightforward: deliver the right equipment at the right time, coupled with the engineering expertise to ensure safe and successful operations. We maintain the most strategically distributed networks in the industry. This footprint reduces freight costs and enables 1–2 business day delivery for most projects across the United States.



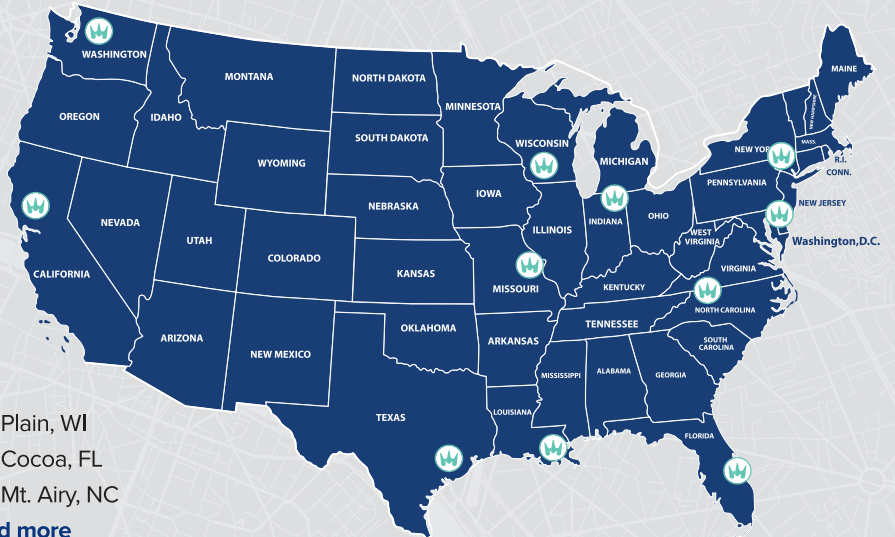
Nationwide footprint for rapid deployment with four major hubs in:

- Seattle, WA
- Belle Chasse, LA
- Berne, IN
- Williamstown, NJ



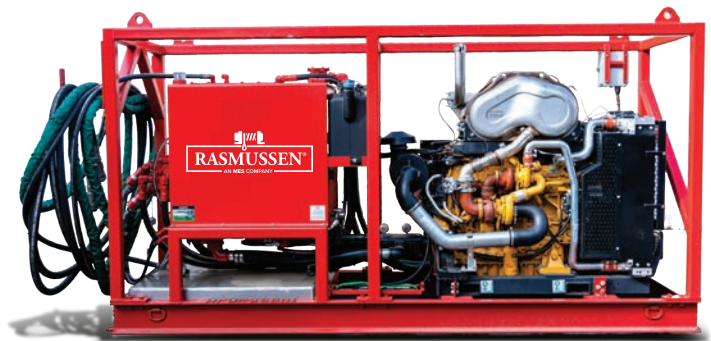
And additional barge yards in:

- St. Louis, MO
 - Coeymans, NY
 - Liverpool, TX
 - Rio Vista, CA
 - Plain, WI
 - Cocoa, FL
 - Mt. Airy, NC
- and more**



MARINE CONSTRUCTION SOLUTIONS FOR NORTH AMERICA

Rasmussen Equipment and Poseidon Barge deliver North America’s most comprehensive, scalable, and reliable marine equipment solutions. From engineered winch systems and mooring packages to new sectional barges and nationwide rental support, our combined capabilities help contractors complete complex marine and civil construction projects with confidence, efficiency, and speed.



COMPLETE MOORING SOLUTIONS INCLUDING:

Hydraulic, Mechanical,
Electric, & Pneumatic Winches
400+ IN STOCK

Swivel Head & Four Roller
Fairleads, Horizontal &
Vertical Sheaves
375+ IN STOCK

Anchor Chain, Wire Rope, &
Rigging Hardware
(VARIOUS SIZES AVAILABLE)

Anchors
(Delta Flipper, Workboat,
Danforth, & Stockless)
150+ IN STOCK

Spherical & Cylindrical Buoys
150+ IN STOCK

Fenders
50+ IN STOCK

**Rasmussen only reps the best,
most dependable brands in
the industry.**

A SINGLE-SOURCE RENTAL PARTNER

Rasmussen simplifies project planning by bundling equipment, accessories, and engineering support into one integrated solution. All items can be packaged, shipped, and invoiced together—reducing administrative burden and accelerating mobilization.



EXTENSIVE SELECTION OF WIRE ROPE AND RIGGING EQUIPMENT

- Custom slings for small and large lifting projects.
- Extensive inventory of wire rope, chain, rope, and cordage hardware. We spool your purchased wire rope on our rental winches, so they show up ready to work!

Rasmussen is the leading stocking distributor of Smith Berger Marine as well as Pullmaster and LANTEC models of TWG winches, offering industry trusted products for demanding marine applications. Additionally, we offer Tier 4 and CARB-compliant HPU's and Winches designed for reliable performance in the most demanding marine environments.

For short term needs or supplemental capacity, Poseidon customers can access Rasmussen's nationwide rental fleet. This synergy reduces freight costs, accelerates delivery, and provides unmatched flexibility for contractors managing fluctuating project demands.



TABLE OF CONTENTS:

Diesel Mechanical Winches	5
Torque Converter Option.....	7
Manual Transmission Option.....	7
Transmission Option	7
Diesel Mechanical Winch - Small Manual Controlled	8
Winches - 10 - 25k lb Line Pull.....	9
Winches - 35k - 75k lb Line Pull.....	10
Winches - 75k - 150k lb Line Pull	11
Winches - 150k - 300k lb Line Pull	12
MES 50	13
Hydraulic Winches.....	14
Rapid Reverse - 6,000 - 75k lb Line Pull	15
Equal Speed - 6,000 - 75k lb Line Pull.....	15
Lantec - 45,000 - 136k lb Line Pull.....	16
Pullmaster H Series - 1,000 - 8k lb Line Pull.....	17
Pullmaster M Series.....	18
Pullmaster PL Series	19
Gearmatic.....	20
Air Winches	21
Air Winches - < 10,000 Pull.....	22
Air Winches - > 10,001 Pull.....	22
Hydraulic Power Unit	23
HPU - Large w/ Pendant Controls - 88GPM-120GPM.....	24
HPU - Large w/ Radio Remote Controls - 120GPM	25
HPU - Small w/ Manual Controls - 22GPM-70GPM.....	25
Fairleads and Deck Sheaves.....	26
Vertical Guide Sheave	27
Horizontal Guide Sheave.....	27
Four Roller Fairlead	28
Blocks.....	29
Anchors	30
Anchors - Size From 100 - 34,000 lbs.....	34
Mooring Buoys.....	36
Fenders.....	36
Sectional Barges.....	37
Sectional Barges - 4ft Narrow.....	38
Sectional Barges - 5ft Tall.....	38
Sectional Barges - 7ft Tall	40
Sectional Barges - 10ft Tall	41
Sectional Barges - Hopper	42
Sectional Barges - P4 ISO.....	43
Sectional Floats - Spuds & Spudwells	44
Sectional Floats - Rakes	45
Sectional Floats - Ramps.....	45
Accessories	46
Hydraulic Power Unit - Combo w/ Winches	46
Barge Pusher	47
Crane Ramps.....	47
Load Monitoring.....	48
Radiolink Plus.....	48
Running Line Dynamometer	49
Jackup	50
Cofferdams.....	53
Line Card	54

DIESEL MECHANICAL WINCHES

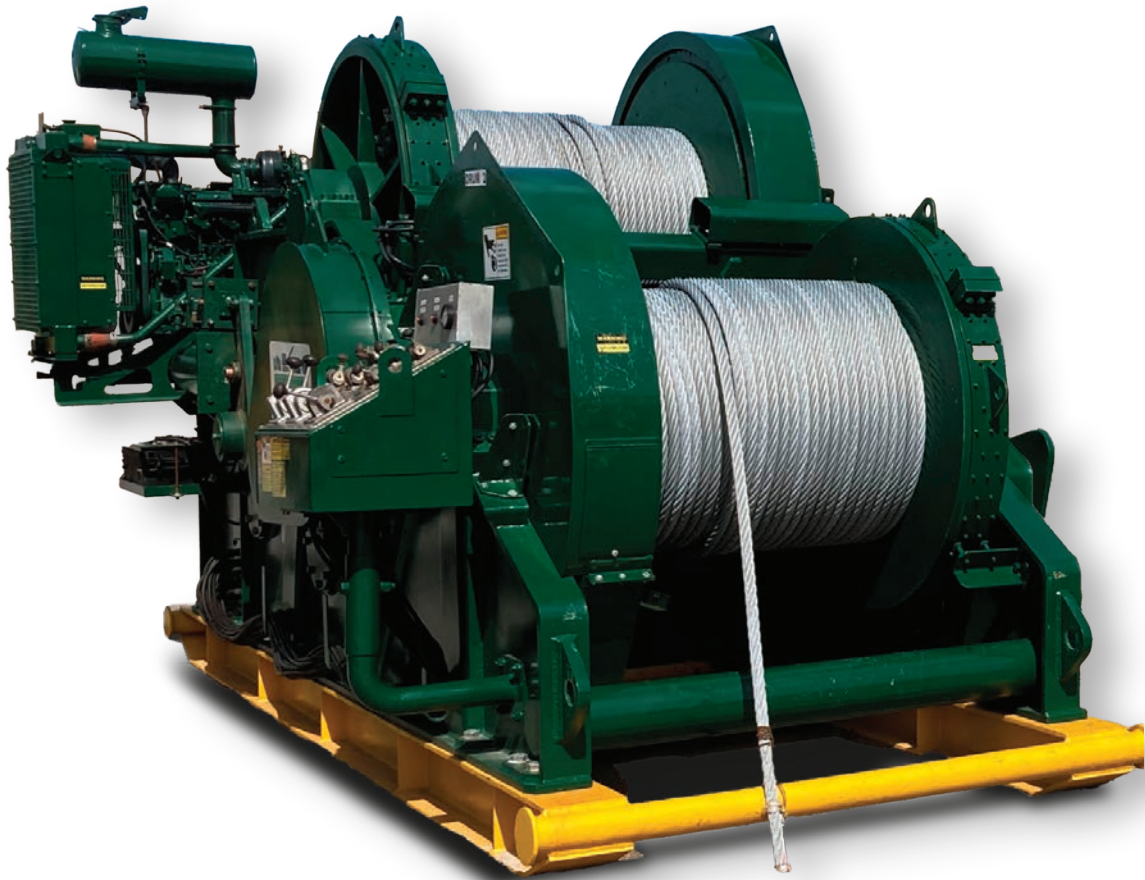
One, two, three, and four-drum winches available in multiple configurations — **including waterfall, back-to-back, and reverse waterfall** layouts. Powertrain options include torque converters, manual transmissions, and power-load-lowering transmissions to suit a range of **pulling, mooring, and controlled lowering** applications.

WINCHES FOR EVERY JOB!

- All Mooring Applications
- Marine Construction
- Erection
- Pipe Pulling
- Barge Positioning / Fleeting
- Spud Lifting / Operation
- Controlled Lowering
- Cable Ways
- And More!

STANDARD EQUIPMENT FEATURES

- Air Controlled
- Manual Controlled
- Diesel & Hydraulic Powered
- Torque Converters, Transmission or Transmissions with Power-Lowering
- Electric Start
- Ratchets / Dogs
- Detachable / Remote Control Console



AVAILABLE CONFIGURATIONS

- Single-Drum Winches
- Two-Drum Winches
- Three-Drum Winches
- Four-Drum Winches

DRUM ARRANGEMENTS

- Waterfall
- Back-to-Back
- Reverse Waterfall

POWERTRAIN OPTIONS

- Torque Converter
- Manual Transmission
- Power Load-Lowering Transmission



GENERAL WINCH APPLICATIONS

Our diesel mechanical winches are used across many sectors and tasks, including:

- General Construction
- Marine Construction
- Mining Operations
- Abandonment and Recovery
- Pipe laying, Beach Pulls, Pull-Ins
- Towing and Anchor Handling
- Spud Installation
- Single- and Multi-Point Mooring
- Demolition and Disaster Relief

TORQUE CONVERTER OPTION

Torque Converters multiply the engine's torque to provide greater pulling force at lower speeds, allowing the winch to handle heavy loads more effectively on pull in function only.. Cable payout is controlled by line loading (load on rope pulls cable off drum).

KEY FEATURES

- Maximizes Initial Line Pull, Then Converts Remaining Power to Speed
- Nearly Infinite Pull / Speed Combinations
- Common Installations Include Allison Model 377 and Twin Disc 10000 Series
- Compact Dimensions Help Maintain Legal Transport Width

TYPICAL APPLICATIONS

- Horizontal Pulling
- Barge Mooring
- Utility and General Construction Winching

LIMITATIONS

- Not Suitable for Controlled Load Lowering Applications

MANUAL TRANSMISSION OPTION

Manual transmissions allow operators to shift through gear ranges to match line pull and line speed with application needs. This option offers flexibility with a straightforward mechanical design.

KEY FEATURES

- Extended Pull/Speed Combinations via Gear Selection
- Cost-Effective Powertrain Solution
- Typically Used on Smaller Skagit Winches and Select Manually Controlled Units
- Compact Footprint for Easier Transport

TYPICAL APPLICATIONS

- Horizontal Pulling
- Barge Mooring
- Standard Winching Tasks

LIMITATIONS

- Not Designed for Controlled Lowering of Suspended Loads

TRANSMISSION OPTION

Some of our winches feature standard transmissions, while others are equipped with retarders. Lowering percentages can vary significantly depending on the presence of a retarder, which provides additional braking force for a more controlled descent. Although you can lower loads with a standard transmission, the capacity is significantly reduced.

It's crucial to note that operating without a retarder can lead to over speeding, risking transmission damage and compromising safety. For tailored advice on your application, consult one of our Sales Engineers today to ensure you select the right equipment.

KEY FEATURES

- Controlled Lowering Under Power Without Brake Reliance
- Handles Heavy Loads with Multiple Cable Parts and Block Systems
- Larger Units Require Oversized Transport
- Available on
 - Large Skagit
 - Amcon Winches

DIESEL MECHANICAL WINCH

SMALL MANUAL CONTROLLED

Compact manual diesel winches for lighter duty pulling, spud handling, and barge positioning operations. **Built rugged with fail-safe braking and rugged control features.**



COMPLIMENTARY PRODUCTS USED WITH OUR WINCHES

- Wire rope with specialized end connections and accessory rigging components
- Synthetic Rope
- Fleeting Sheaves
- Horizontal Sheaves
- Vertical Sheaves
- Fairleaders
- Snatch Blocks – single or multiple sheaves
- Anchors
- Buoys
- Swivels
- Stud Link Anchor Chain
- Pelican Hooks
- Spare Parts for long term projects

TYPICAL APPLICATIONS

- Spud Handling
- Barge Positioning and Fleeting
- Light General Construction Pulling

Uses: Spuds, Barge Positioning / Fleeting, Light General Construction

WINCHES 10 - 25K LB LINE PULL

A versatile range of mid-capacity diesel mechanical winches designed for general construction, marine, and barge mooring applications. Available in single and double drum configurations with manual controls, air controls, or torque converter powertrain options.

KEY FEATURES

- Extended Pull/Speed Combinations via Gear Selection
- Cost-Effective Powertrain Solution
- Typically Used on Smaller Skagit Winches and Select Manually Controlled Units
- Compact Footprint for Easier Transport

TYPICAL APPLICATIONS

- Horizontal Pulling
- Barge Mooring
- Standard Winching Tasks



Skagit GU-8

- Double Drum Waterfall Winch
- Manual Controls
- Caterpillar 2.2L Diesel Engine
- Torque Converter

Wire Rope Capacity	
Size (in)	Length (ft)
1/2	1230
9/16	970
5/8	790



Skagit BU-15

- Double Drum Waterfall Winch
- Manual Controls
- Detroit Diesel 3-71N65 Engine
- Skagit TRA-50 4-Speed Transmission
- 15,000 lbs Bare Drum Pull @ 50 fpm

Wire Rope Capacity	
Size (in)	Length (ft)
1/2	1340
5/8	850
3/4	590



Skagit GU-10

- Double Drum Waterfall Winch
- Manual Controls
- Caterpillar 2.2L Diesel Engine
- Torque Converter
- 11,463 lbs Bare Drum Pull @ 85 fpm

Wire Rope Capacity	
Size (in)	Length (ft)
1/2	2100
5/8	1340
3/4	935



Clyde Frame 5

- Double Drum Winch
- Air Controls
- Caterpillar C4.4 Diesel Engine
- Allison Torque Converter
- 20,000 lbs Bare Drum Pull @ 49 fpm

Wire Rope Capacity	
Size (in)	Length (ft)
1/2	3950
5/8	2520
3/4	1750



American AH&D 120-B

- Double Drum Waterfall Winch
- Manual Controls
- Diesel Engine
- Allison Torque Converter

Wire Rope Capacity	
Size (in)	Length (ft)
5/8	2620
3/4	1884



Clyde Frame 5

- Triple Drum Winch
- Manual Controls
- Diesel Engine
- Allison Torque Converter
- 20,000 lbs Bare Drum Pull @ 49 fpm

Wire Rope Capacity	
Size (in)	Length (ft)
1/2	3950
5/8	2520
3/4	1750

WINCHES 35K - 75K LB LINE PULL

Heavy-capacity diesel mechanical winches engineered for demanding mooring, anchoring, towing, marine construction, erection/lifting, barge positioning, and general pulling applications. Available in multiple drum configurations and controls to suit a range of field requirements.

KEY FEATURES & EQUIPMENT BENEFITS

These winches may vary slightly by model, but commonly include the following features:

POWER & CONTROLS

- Tiered Diesel Engines with CARB Permits for Stringent Emissions Compliance
- Manual or Air-Actuated Controls
- Diesel or Hydraulic Power Options
- Electric Start Capability
- Torque Converter or Multi-Speed Transmission Options
- Detachable or Remote Control Consoles Available

CONSTRUCTION & SERVICEABILITY

- Skid-Mounted, Self-Contained Units
- Onboard Fuel Tanks
- Spring-Set Air Released Fail-Safe Brakes
- Ratchets and Dogs for Secure Engagement
- In-Frame Fleeting Sheaves on Most Models

PERFORMANCE

- Wire Rope Sizes From 7/8" to 1-3/8" (Lengths up to 3,400 ft, Model Dependent)
- Line Pulls Up To 37.5 Tons Single Line Pull (SLP)
- Brake Holding Capacities up to 112,500 lbs on 1st Layer
- Wide Range of Achievable Pulls Depending on Setup and Application

TYPICAL APPLICATIONS

- Mooring and Multi-Point Mooring Systems
- Anchoring and Tugging Operations
- Marine and Offshore Construction
- Erection and Lifting Support
- Heavy Pulling, Barge Positioning, and Fleeting
- Pipeline and Subsea Pull-In Assistance
- Utility, Industrial, and Heavy Civil Construction



STANDARD MODELS & CONFIGURATIONS AVAILABLE

QUANTITY	MANUFACTURER	MODEL
7	CLYDE FRAME 6	2D
4	CLYDE FRAME 6	3D
1	CLYDE FRAME 6	4D
6	CLYDE FRAME 7	2D
2	RAS 4565	2D
1	SKAGIT G-45	2D
1	SKAGIT G-45	3D
9	SKAGIT G-70	2D
1	SKAGIT G-70	4D
12	CLYDE FRAME 8	2D
2	CLYDE FRAME 8	3D
1	CLYDE FRAME 10	2D
4	SKAGIT G-95	2D

DRUM CONFIGURATIONS INCLUDE

- Double Drum (2D)
- Triple Drum (3D)
- Four Drum (4D)
- Back-to-Back Four Drum

WINCHES 75K - 150K LB LINE PULL

Heavy-duty diesel mechanical winches engineered for demanding marine and industrial applications. Ideal for mooring, anchoring, towing, circuit construction tasks, erection/lifting, pulling, barge positioning/fleeting, abandonment and recovery.

KEY FEATURES & EQUIPMENT BENEFITS

These winches may vary slightly by model, but commonly include the following features:

POWER & CONTROLS

- Tiered Diesel Engines with CARB Permits Available
- Manual or Air-Actuated Control Options
- Diesel Powered with Electric Start
- Torque Converter and Multi-Speed Transmission Options
- Detachable or Remote Control Consoles

CONSTRUCTION & SERVICEABILITY

- Skid Mounted, Self-Contained Design
- Onboard Fuel Tanks and Air Compressors at Engine
- Spring-Set, Air-Released Fail-Safe Brakes
- Ratchets and Dogs For Secure Mechanical Engagement
- In-Frame Fleeting Sheaves on Most Models

PERFORMANCE

- Wire Rope Capacities From 1-1/4" to 1-3/4" (Lengths up to ~6,575 ft Depending On Model)
- Line Pulls up to 75 Tons Single Line Pull (SLP)
- Brake Holding Capacities up to 245,000 lbs on First Layer
- Wide Pull/Speed Combinations Achievable Based on Setup and Application

TYPICAL APPLICATIONS

- Mooring and Multi-Point Mooring
- Anchoring and Towing Operations
- Marine and Civil Construction
- Erection and Lifting Support
- Barge Positioning and Fleeting
- Abandonment and Recovery

NOTES

- Feature Availability Varies by Model and Configuration
- Consult Detailed Spec Sheets for Exact Rope Size, Speeds, and Capacity Curves
- Optional Upgrades and Accessories Available



STANDARD MODELS & CONFIGURATIONS AVAILABLE

QUANTITY	MANUFACTURER	MODEL
1	AMCON 625	2D
1	CLYDE FRAME 12	2D
2	SKAGIT G-120	2D
2	SKAGIT G-120	2D
2	SKAGIT BU-140	2D
2	SKAGIT BU-140	2D
2	SKAGIT G-160	2D
2	SKAGIT G-160	2D
3	MANITOWOC 390	2D
2	MANITOWOC 390	3D
5	SKAGIT RB80	2D
2	SKAGIT RB90	1D
2	SKAGIT RB90	3D
21	SKAGIT RB90	2D

DRUM CONFIGURATIONS INCLUDE

- Single Drum (1D)
- Double Drum (2D)
- Triple Drum (3D) with Manual or Air Controls

WINCHES 150K - 300K LB LINE PULL

Extreme capacity diesel mechanical winches engineered for heavy marine, offshore, and industrial projects. These units deliver superior pulling power and controlled load handling, with torque converter, transmission, and optional power-load-lowering systems for precision operation.

KEY FEATURES & EQUIPMENT BENEFITS

These winches may vary slightly by model, but commonly include the following features:

POWER & CONTROLS

- Tiered Diesel Engines with CARB Permits Available
- Air-Actuated Control Systems
- Diesel Power with Electric Start
- Torque Converter and Multi-Speed Transmission Options
- Power-Load-Lowering Control on Select Models
- Optional Remote/Detachable Control Consoles

RUGGED CONSTRUCTION

- Skid-Mounted, Self-Contained Units with Onboard Air Compressor
- Onboard Fuel Tanks
- Spring-Set, Air Released Fail-Safe Braking Systems
- Ratchets and Dogs for Positive Mechanical Engagement
- In-Frame Fleeting Sheaves on Most Models

PERFORMANCE

- Wire Rope Capacities From 1-1/2" to 2-1/4" (Lengths up to ~8,440 ft Depending on Model)
- Line Pulls up to 150 Tons Single Line Pull (SLP)
- Brake Holding Capacities up to 450,000 lbs on 1st Layer
- Achievable Pulls up to 400 Tons Depending on Application and Setup

TYPICAL APPLICATIONS

- Mooring and Multi-Point Mooring Systems
- Anchoring and Tugging Operations
- Marine and Offshore Construction
- Erection and Lifting Support
- Heavy Pulling, Barge Positioning, and Fleeting
- Pipeline and Subsea Pull-In Assistance
- Utility, Industrial, and Heavy Civil Construction



STANDARD MODELS & CONFIGURATIONS AVAILABLE

QUANTITY	MANUFACTURER	MODEL
2	SKAGIT RB90SS	2D
1	AMCON 750	2D
8	SKAGIT RB97	2D
3	SKAGIT DTW-100	2D
5	SKAGIT DTW-150	2D
4	SKAGIT MD97	2D
2	SKAGIT MD97	1D
1	SKAGIT RB-100	2D
3	SKAGIT RB-100	2D

DRUM CONFIGURATIONS INCLUDE

- Single Drum (1D)
- Double Drum (2D) with Advanced Drivetrain and Control Options
- Triple Drum (3D)

INTRODUCING THE

MES 50



We teamed up with Timberland Equipment Limited to create the MES 50, a next-generation take on the trusted friction winch — now powered by hydraulics and equipped with precision controls. Built to deliver the same legendary strength and durability as traditional friction units, the MES 50 elevates performance with advanced hydraulic technology, offering improved safety, efficiency, and reliability on every job.

- Anchor Line Mooring and Spud Lifting/Lowering
- Adjustable Speed and Pull From 25,000 – 50,000 lbs.
- Wire Rope Capacity Up To 3,300ft
- Wire Rope Diameter 7/8” – 1-1/4”
- All Features Hydraulically Driven, and Joystick Controlled
- Band Brake
- Jaw Clutch (For Freewheeling)
- Locking Dog
- Modular Design
- Diesel or Electric HPU Available

HYDRAULIC WINCHES

WINCHES FOR EVERY JOB!

- All Mooring Applications
- Marine Construction
- Erection
- Pipe Pulling
- Barge Positioning / Fleeting
- Spud Lifting / Operation
- Cable Ways and More
- Controlled Lowering

APPLICATION:

Lifting, Pulling, Hoisting, Moving smaller objects are the deck of a barge

RAPID REVERSE

High-performance, high-efficiency planetary winch with rapid reverse speed 4.5 times faster than forward speed. In reverse rotation (lowering), the maximum load can be positively controlled at a line speed equal to the hoisting speed.

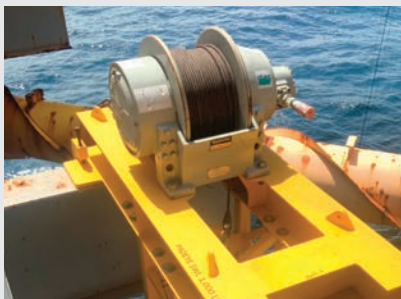
- Hydraulic Gear Motor
- Spring-Applied, Pressure Released Multi-Disc Brake with Static And Dynamic Functions
- During Hoisting the Hydraulic Motor Drives Direct into the Planetary Reductions Without Affecting the Brake Assembly. When Forward Rotations Stopped, an Over-Running Clutch Will Lock and the Multi-Disc Brake Will Positively Hold the Maximum Load
- During Lowering the Brake is Released Automatically and Then Modulated for the Desired Lowering Speed by a Single Control Lever
- A Counter-Balance Valve is Not Required for Smooth and Positive “Down” Control



EQUAL SPEED

High-performance, high-efficiency planetary winch with equal speed in both directions. The M series offers exceptionally smooth lowering control of the maximum rated load in a step-less operation.

- Hydraulic Gear Motor
- Spring-Applied, Pressure Released, Automatic Multi-Disc Brake
- During Lowering Operations, the Over-Running Clutch Locks Causing the Disc Brakes to Rotate Between a Series of Divider Discs. Dynamic Breaking Then Achieved By Modulation of The Winch Control Valve Handle. When the Control is Returned to Neutral Position, the Brake Applies Automatically
- A Counter-Balance Valve is Not Required for Smooth and Positive “Down” Control



INFO NEEDED TO SIZE A WINCH

- Diameter of Wire Rope
- Length of Wire Rope Per Drum
- Amount of Line Pull Required Including at What Position on the Drum
- Type of Control Desired, Air / Manual / Hydraulic
- Application or Use

HYDRAULIC WINCH - LANTEC



Additional Models and Accessories Available

PRODUCT DETAILS

MANUFACTURER: Lantec

MODELS: Classic Series 200, 540, 750. LW Series 100.

USES: Hydraulic winch for mooring applications, controlling anchors, fleeting, and spuds

COMPLIMENTARY PRODUCTS: Wire Rope

PERKS AND FEATURES

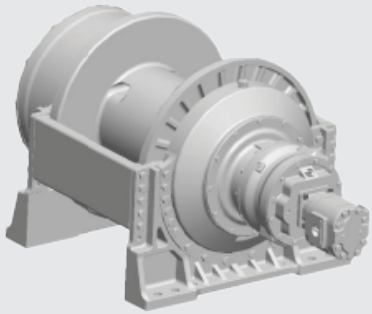
- The LANTEC® Model 200 Hydraulic Planetary Winch (Classic Series) Includes a Hydraulic Gear Motor, Spring-Applied Hydraulic-Released Multi-Disc Brake with Overrunning Clutch and Two Planetary Gear Reductions. The Model 200 is a Power In/Power Out Winch With Equal Speed In Both Directions. Line Pull of 45,000 lbs.
- The LANTEC® Model 540 Hydraulic Planetary Winch (Classic Series) Includes a Hydraulic Gear Motor, Spring-Applied Hydraulic-Released Multi-Disc Brake with Overrunning Clutch and Three Planetary Gear Reductions. the Model 540 is a Power In/Power Out Winch with Equal Speed in Both Directions. Line Pull of 101,000 lbs.
- The LANTEC Model 750 Hydraulic Planetary Winch (Classic Series) Includes a Hydraulic Gear Motor, Spring-Applied Hydraulic-Released Multi-Disc Brake with Overrunning Clutch and Three Planetary Gear Reductions. The Model 750 is a Power In/Power Out Winch With Equal Speed in Both Directions. Line Pull of 136,000 lbs.
- LANTEC LW Series Winches (LW 100) are Suitable for Most Crane and Lifting Applications as Well as Pulling and Positioning. They are Available With Single Drives or Dual Drives. Dual Drives Have Two Motors, Two Brakes, and Two Drive Modules, for High Horsepower Capability.

MODEL #	BARE DRUM		MEAN DRUM		FULL DRUM		MAXIMUM WIRE SIZE (in)	CAPACITY (ft)
	LINE PULL (lbs)	LINE SPEED (fpm)	LINE PULL (lbs)	LINE SPEED (fpm)	LINE PULL (lbs)	LINE SPEED (fpm)		
LWS1200	162,000	30	119,739	37	102,000	48	1-1/2"	1,261
LWS100	13,500	110	-	-	-	-	3/4	3,300
200-103	45,175	70	24,160	132	17415	182	1	770
200-106	36,250	88	23,260	137	17125	186	1	680
540-122	73,634	42	48,813	63	40600	75	1-1/8	641
540-123	73,634	42	48,813	63	40600	75	1-1/8	1,000
540-133	57,925	53	39,138	78	30810	100	1-1/8	1,412
750-122	99,750	31	65,000	47	51600	60	1-3/8	355
750-143	78,750	39	48,264	63	36500	84	1-3/8	1,698
750-163	59,850	51	40,440	76	31835	96	1-3/8	2,060

* Performance based on manufacturer specified hydraulic flow and pressure. Detailed spec sheets with dimensions and installation instructions are available upon request.

Note: Common inventory sizes listed above, custom sizes available upon request.

HYDRAULIC WINCH - PULLMASTER H SERIES



Additional Models and Accessories Available

PRODUCT DETAILS

MANUFACTURER: Pullmaster

MODELS: H Series (Rapid Reverse) Range from 6,000lb line pull to 75,000lb line pull

USES: High-performance, high-efficiency planetary winch with rapid reverse speed. Pulls in 4.5 times faster than forward speed. In reverse rotation (lowering), the maximum load can be positively controlled at a line speed equal to the hoisting speed.

COMPLIMENTARY PRODUCTS: Wire Rope, HPU's

PERKS AND FEATURES

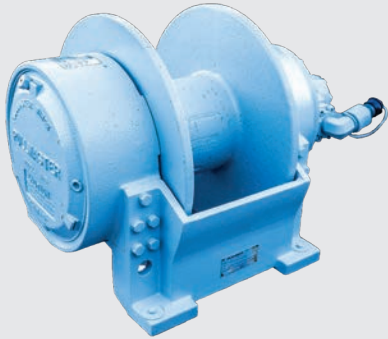
- Hydraulic Gear Motor
- Spring-Applied, Pressure-Released Multi-Disc Brake with Static and Dynamic Functions
- During Hoisting, the Hydraulic Motor Drives Direct Into the Planetary Reductions Without Affecting the Brake Assembly. When Forward Rotation is Stopped, an Over-Running Clutch Will Lock and The Multi-Disc Brake Will Positively Hold the Maximum Load
- During Lowering, the Brakes Released Automatically and Then Modulated for the Desired Lowering Speed By a Single Control Lever
- A Counter-Balance Valve is Not Required for Smooth and Positive “Down” Control

ADD-ON FEATURES

- **Drum Rotation** - The Direction of Rotation is Determined By Looking at the Motor Side of the Winch. Standard Rotation For Hoisting on all PI And R Series Models is Counterclockwise. Standard Rotation For Hoisting on all M and H Series Models is Clockwise. as an Option, Pullmaster Winches are Also Offered With the Direction of Rotation For Hoisting a Load Opposite to the Standard Rotation.
- **Grooved Drums** – Drums Can Be Grooved to Fit a Specified Wire Size To Maintain Perfect Wraps.
- **Free Spool** – Drum Brake Can Be Unapplied and Wire Can Be Spooled or Pulled Off By Hand.

MODEL #	BARE DRUM			MEAN DRUM			FULL DRUM			MAXIMUM WIRE SIZE (in)	CAPACITY (ft)
	LINE PULL (lbs)	LINE SPEED (fpm)		LINE PULL (lbs)	LINE SPEED (fpm)		LINE PULL (lbs)	LINE SPEED (fpm)			
		FORWARD	REVERSE		FORWARD	REVERSE		FORWARD	REVERSE		
H12-3-97-1	12,121	104	449	9,362	140	606	7,143	176	762	5/8	222
H18-3-101-1	18,000	122	561	14,053	157	722	11,526	191	878	7/8	113
H18-3-101-3	18,000	121	518	12,375	178	765	8,825	249	1,072	7/8	372
H25-3-86-1	25,000	139	649	20,678	169	786	17,626	198	924	1-1/4	79
H25-3-86-2	25,000	139	649	16,049	218	1,018	11,818	295	1,377	1-1/4	186
H30-3-86-52	25,000	146	681	15,540	360	1,679	6,080	574	2,677	1	2,759
H50-3-86-13	50,000	59	324	30,500	114	532	21,942	158	739	1-1/4	1,503
H50-3-86-1	50,000	69	322	42,533	84	392	35,065	99	462	1-1/4	177
H50-3-86-2	40,000	86	402	33,150	106	495	27,690	126	588	1-1/4	440
H50-3-86-32	50,000	69	319	34,773	100	466	26,424	131	614	1-1/4	552
H75-7-191-5	75,000	63	261	53,300	101	419	36,300	148	614	1-1/4	1,503
H75-7-191-6	75,000	72	298	58,374	100	417	41,748	129	536	1-1/4	559

HYDRAULIC WINCH - PULLMASTER M SERIES



Additional Models and Accessories Available

PRODUCT DETAILS

MANUFACTURER: Pullmaster

MODELS: M Series (Equal Speed) Range from 6,000lb line pull to 75,000lb line pull

USES: High-performance, high-efficiency winch with equal speed in both directions. The M series offers exceptionally smooth lowering control of the maximum rated load in a step-less operation.

COMPLIMENTARY PRODUCTS: Wire Rope, HPU's

PERKS AND FEATURES

They are equal speeds in both directions with the following features:

- Hydraulic Gear Motor
- Spring-Applied, Pressure-Released Multi-Disc Brake with Static and Dynamic Functions
- During Hoisting, the Hydraulic Motor Drives Direct into the Planetary Reductions Without Affecting the Brake Assembly. When Forward Rotation is Stopped, an Over-Running Clutch Will Lock and the Multi-Disc Brake Will Positively Hold the Maximum Load
- During Lowering, the Brakes Released Automatically and Then Modulated for the Desired Lowering Speed by a Single Control Lever

ADD-ON FEATURES

- **Drum Rotation** - The Direction of Rotation is Determined by Looking at the Motor Side of the Winch. Standard Rotation for Hoisting on all PI And R Series Models is Counterclockwise. Standard Rotation for Hoisting on all M And H Series Models is Clockwise. as an Option, Pullmaster Winches are Also Offered with the Direction of Rotation for Hoisting a Load Opposite to the Standard Rotation.
- **Grooved Drums** – Drums Can Be Grooved to Fit a Specified Wire Size to Maintain Perfect Wraps.
- **Free Spool** – Drum Brake Can Be Unapplied and Wire Can Be Spooled or Pulled Off By Hand.

MODEL #	BARE DRUM		MEAN DRUM		FULL DRUM		MAXIMUM WIRE SIZE (in)	CAPACITY (ft)
	LINE PULL (lbs)	LINE SPEED (fpm)	LINE PULL (lbs)	LINE SPEED (fpm)	LINE PULL (lbs)	LINE SPEED (fpm)		
M8-3-30-1	8,500	116	7,148	143	5,795	170	1/2	152
M12-3-97-1	12,000	104	9,660	138	7,319	172	5/8	222
M12-3-97-5	12,000	100	8,320	151	6,250	201	5/8	323
M18-3-101-1	18,000	122	14,644	159	11,288	195	7/8	113
M18-3-101-3	18,000	121	-	-	8,649	255	7/8	372
M25-3-86-1	25,000	140	21,315	169	17,630	198	1	91
M25-3-86-2	25,000	140	18,400	217	11,821	295	1	264
M25-3-86-3							1	408
M25-7-86-4							1	528
M50-3-86-1	50,000	69	42,533	84	35,065	99	1-1/4	177
M50-3-86-2	40,000	86	33,850	106	27,960	126	1-1/4	440
M50-3-86-32	50,000	69	36,300	96	26,300	132	1-1/4	552
M75-7-191-5	75,000	72	58,374	100	41,748	129	1-1/4	559
M75-7-191-6	75,000	63	53,102	108	31,244	153	1-1/4	1,503

HYDRAULIC WINCH - PULLMASTER PL SERIES



PRODUCT DETAILS

MANUFACTURER: Pullmaster

MODELS: PL Series XXX(This is the style of winch PL, M, and H and size 1,2,5,8 in this case)-XX(The type of brake option or rotation)-XXX(Motor size)-X(Drum size)

USES: PL winches are the smallest line of winches ranging from 1K bare drum pull up to 8K bare drum pull. We Get 45% off list pricing from Pullmaster as a Platinum dealer.

COMPLIMENTARY PRODUCTS: Wire Rope

PERKS AND FEATURES

They are equal speeds in both directions with the following features:

- Hydraulic Gear Motor
- Spring-Applied, Pressure-Released, Automatic Multi-Disc Brake
- Over-Running Clutch Enables Free Rotation in the Hoisting Direction Without Affecting the Brake.
- During Lower Operations, the Over-Running Clutch Locks Causing the Disc Brakes to Rotate Between a Series of Divider Discs. Dynamic Braking is Then Achieved By Modulation of the Winch Control Valve Handle. When the Control is Returned to Neutral Position, the Brake Applies Automatically.
- A Counter-Balance Valve is Not Required For Smooth and Positive “Down” Control.

ADD-ON FEATURES

- **Drum Rotation** - The Direction of Rotation is Determined By Looking at the Motor Side of the Winch. Standard Rotation For Hoisting on All PL And R Series Models is Counterclockwise. Standard Rotation For Hoisting on All M And H Series Models is Clockwise. As an Option, Pullmaster Winches Are Also Offered With the Direction of Rotation For Hoisting a Load Opposite to the Standard Rotation.
- **Grooved Drums** – Drums Can Be Grooved to Fit a Specified Wire Size To Maintain Perfect Wraps.
- **Free Spool** – Drum Brake Can Be Unapplied and Wire Can Be Spooled or Pulled off By Hand.

MODEL #	BARE DRUM		FULL DRUM		MAXIMUM WIRE SIZE (in)	CAPACITY (ft)
	LINE PULL (lbs)	LINE SPEED (fpm)	LINE PULL (lbs)	LINE SPEED (fpm)		
PL1-12-227-1	1,100	78	821	104	1/4	87
PL2-12-228-1B	2,204	83	1633	111	3/8	84
PL5-12-210-1	4,500	135	3328	183	7/16	110
PL2-18-228-4-B	2,204	83	1710	53	3/8	130
PL5-18-210-5	4,500	135	3370	180	7/16	105

HYDRAULIC WINCH - GEARMATIC

PRODUCT DETAILS



GEARMATIC MODEL: GM12A-4151-01
BARE DRUM PULL: 12,000 lbs. @ 100 FPM
MAX GPM & PSI: 50 GPM @ 2,200 PSI
DRUM CAPACITY: 570' of 3/8", 308' of 1/2", 225' of 5/8"
DRUM SIZE: Flange=14.63" Barrel=7.63" Length=10"
APPROX. DIMENSIONS: L=31.58" x W=18.25" x H=15.89"
APPROX. WEIGHT: 500 lbs



GEARMATIC MODEL: GM12A-4151-05
BARE DRUM PULL: 12,000 lbs. @ 100 FPM
MAX GPM & PSI: 50 GPM @ 2,200 PSI
DRUM CAPACITY:
DRUM SIZE: Flange=16.63" Barrel=7.63" Length=10"
APPROX. DIMENSIONS: L=31.58" x W=18.25" x H=16.89"
APPROX. WEIGHT: 550 lbs



GEARMATIC MODEL: GM12 HSR 41/9051-01
 HIGH SPEED REVERSE
BARE DRUM PULL: 12,000 lbs. @ 100 FPM in, 2,800 lb Cap on Payout
MAX GPM & PSI: 50 GPM @ 2,200 PSI
DRUM CAPACITY: 570' of 3/8", 308' of 1/2", 225' of 5/8"
DRUM SIZE: Flange=14.63" Barrel=7.63" Length=10"
APPROX. DIMENSIONS: L=31.58" x W=18.25" x H=15.89"
APPROX. WEIGHT: 550 lbs



GEARMATIC MODEL: GM12 HSR 41/9051-05
 HIGH SPEED REVERSE
BARE DRUM PULL: 12,000 lbs. @ 100 FPM in, 2,800 lb Cap on Payout
MAX GPM & PSI: 50 GPM @ 2,200 PSI
DRUM CAPACITY:
DRUM SIZE: 16.63" Barrel=7.63" Length=10"
APPROX. DIMENSIONS: L=31.58" x W=18.25" x H=16.89"
APPROX. WEIGHT: 550 lbs

AIR WINCHES

APPLICATION: For lifting and suspension applications. Utilizing a compressed air source to drive the winch, they perform by pulling objects or equipment from a crank system and are used in construction, maritime, and oil and gas industries.

PERKS AND FEATURES

- Manual Brake
- Auto Band Brake
- Do Not Need a DHPU (No Spark)
- Can Utilize Existing Compressed Air Sources on Site / Facility
- Will Need 95-110 Psi
- Air Supply CFM Should Be 125% of Required Flow

COMPLIMENTARY PRODUCTS

- Wire Rope With Specialized End Connections and Accessory Rigging Components
- Synthetic Rope
- Fleeting Sheaves
- Horizontal Sheaves
- Vertical Sheaves
- Fairleaders
- Snatch Blocks – Single or Multiple Sheaves
- Anchors
- Buoys
- Swivels



AIR WINCHES < 10,000 PULL



PRODUCT DETAILS

MANUFACTURER: Ingersoll Rand Winches

MODELS: IR: BU, EU, HU, K4U, K6U, FA2B

THERN: TA16, TA2

USES: For tensioning applications, fleeting barges, small recovery jobs, Utilizing a compressed air source to drive the winch.

INGERSOLL-RAND WINCHES

MODEL	BARE DRUM PULL (LBS)	WIRE ROPE SIZE (IN)	CAPACITY
BU7A	20,000	5/16	144
EU	4,500	3/8	226
HU	3,150	1/2	379
HU40	3,150	1/2	379
HUL40	9,000	1/2	800
K4ULR	10,000	5/8	880
K6UL	15,000	3/4	950

STANDARD FEATURES

- Radial Piston Motor
- Precise Control Valve
- Manual Band Brake
- Welded Steel Frame
- Planetary Gears
- Meets ASME 30.7

AIR WINCHES > 10,001 PULL



PRODUCT DETAILS

MANUFACTURER: Ingersoll Rand / Thern

MODELS: IR: K6UL

THERN: TA5

USES: For lifting, tensioning, and suspension applications. Utilizing a compressed air source to drive the winch.

THERN WINCHES

MODEL	BARE DRUM PULL (LBS)	WIRE ROPE SIZE (IN)	CAPACITY
TA2-16	3,300	1/2	850
TA2-24	7,200	1/2	1,270
TAS-24	18,000	7/8	1,020

STANDARD FEATURES

- Radial Piston Motor
- Welded Steel Frame
- High-Efficiency Planetary Gearing, High Torque
- Lever Actuated Band Brake
- Meets ASME 30.7

HYDRAULIC POWER UNIT

The diesel hydraulic winch drive system is designed to operate up to three hydraulic winches. The system consists of the following primary components:

- Diesel Engine
- Large Fixed-Displacement Pumps
- Relief Valves to Protect System Components From Excessive Pressure
- Dual or Quad Directional Control Valves
- Up to Four Hydraulic Winches With Internal Brakes
- Up to 50ft Pendant Remote Control Station From One Three Function Remote



HYDRAULIC POWER UNIT - SYSTEM OVERVIEW

When the diesel engine is operational, oil circulates from large fixed-displacement pumps through a hydraulically piloted, proportional-controlled directional valve, and then passes through the return filter before returning to the tank.

When the remote pendant joystick is engaged, flow from the pilot pump is directed to the corresponding spool on the proportional-controlled directional valve, causing the spool to shift. This action directs flow from the fixed-displacement pumps to the hydraulic winch controlled by that spool. Each winch is equipped with a mechanically spring-applied, hydraulically released internal brake. When flow is directed to a winch, the oil pressure releases the brake, allowing the winch to operate. Upon releasing the joystick, the directional valve spool returns to the neutral position, stopping the winch and automatically setting the brake.

If a winch stalls during operation due to excessive load, hydraulic pressure will quickly rise to the relief valve setting, allowing flow to return to the reservoir to protect the system. The volume of oil delivered to a winch is directly proportional to the joystick movement. For instance, if the joystick is moved halfway, the directional valve spool shifts halfway, delivering 50% of the pump output to the winch.

When multiple joysticks are operated simultaneously, spool #1 (nearest to the valve inlet) has the highest priority, followed by spool #2, and so on. If the joystick controlling spool #1 is fully engaged, 100% of the pump output will be directed to that winch, rendering other winches inoperable until the joystick is partially or fully released. To operate winches simultaneously, the operator must modulate the joysticks to appropriately distribute the pump output among the winches.

HPU - LARGE W/ PENDANT CONTROLS



PRODUCT DETAILS

MANUFACTURER: Rasmussen and Misc

ENGINE MODELS: C7, C71, 3126B Detroit 8V, Series 40E, Detroit 6-71

USES: Our HPU's are used to run a vast majority of products ranging from Pullmaster, Lantec, and converted DM winches to pile hammers and submersible water pumps

COMPLIMENTARY PRODUCTS: Lantec, Pullmaster, DP, Converted DM winches

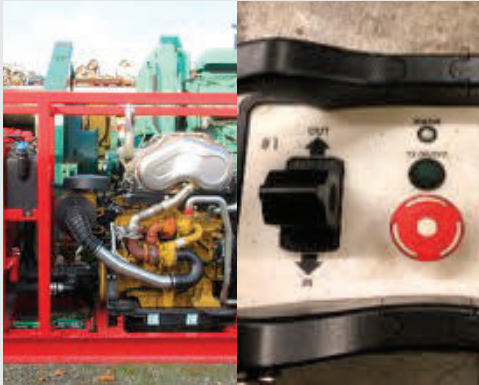
PERKS AND FEATURES

- Plug and Play With QD Fittings on the Valves
- Tier 3 and Newer Can Be Carb Permitted
- Can Run Multiple Items With 1 Engine
- 2500PSI – 4000PSI
- 88GPM- 120GPM
- Controls Can Be Mounted up to 50' Away From Power Unit

APPLICATION

- Our Hydraulic Power Units Are Built to Provide Hydraulic Power to 1-4 Pieces of Equipment Per Unit. These Particular Units Have Manual Controls at the Winch So Operators Can Stay Close to the Power Unit and Control the Engine as Well.

HPU - LARGE W/ RADIO REMOTE CONTROLS



PRODUCT DETAILS

MANUFACTURER: Rasmussen

ENGINE MODELS: C7, C7.1

USES: Our HPU's are used to run a vast majority of products ranging from Pullmaster, Lantec, and converted DM winches to pile hammers and submersible water pumps. With Remote Radio Controls you are able to operate the winches from long distances without pendant lines to the controls.

COMPLIMENTARY PRODUCTS: Lantec, Pullmaster, DP, Converted DM winches

PERKS AND FEATURES

- Plug and play with QD fittings on the valves
- Tier 3 and newer can be CARB permitted
- Can run multiple items with 1 engine
- 2500PSI – 4000PSI
- 120GPM
- Radio Remote Controls to free up extra lines being run from the unit to the controls
- Can use from ¼ mile away if little obstruction is present

APPLICATION

- Our Radio Remote Control hydraulic power units are built to provide hydraulic power to 1 or 2 pieces of equipment per unit. With the Radio Remote Controls the operator is able to operate the winches from up to ¼ mile away with limited obstructions and eliminate extra hoses to a joystick control box. The more obstructions the closer the operator will have to be to the unit.

HPU - SMALL W/ MANUAL CONTROLS



PRODUCT DETAILS

MANUFACTURER: Rasmussen and Misc

ENGINE MODELS: C2.2, C4.4, 4-53

USES: Our HPU's are used to run a vast majority of products ranging from Pullmaster, Lantec, and converted DM winches to pile hammers and submersible water pumps.

COMPLIMENTARY PRODUCTS: Lantec, Pullmaster, DP, Converted DM winches

PERKS AND FEATURES

- 22GPM-70GPM
- Plug and Play With QD Fittings on The Valves
- Tier 3 and Newer Can Be CARB Permitted
- Can Run Multiple Items With 1 Engine
- 2500PSI – 4000PSI

APPLICATION

- Our Hydraulic Power Units Are Built to Provide Hydraulic Power to 1-4 Pieces of Equipment Per Unit. These Particular Units Have Manual Controls at the Winch So Operators Can Stay Close to the Power Unit and Control the Engine as Well.

FAIRLEADS & DECK SHEAVES

SHEAVE STANDARD FEATURES

- Designed for Breaking Strength of Wire Rope with 90 Degree Wrap on a Sheave and +/-90 Degree Rotation of Swivel Head
- Cast Steel Sheave With Hardened Rope Groove For Longer Life
- Sealed, Grease Lubricated, Tapered Roller Bearings
- Weld Down Mounting Base
- Removable Guide Roller
- Epoxy Primer Coating

FAIRLEAD STANDARD FEATURES

- Designed with a SWL per O.C.I.M.F. Rev. 3 Guidelines
- Hardened Rollers For Longer Life
- Grease Lubricated Bronze Bearings
- Epoxy Primer Coating

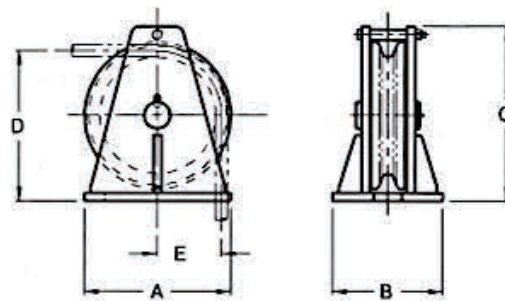
VERTICAL GUIDE SHEAVE

OPTIONAL FEATURES

- Tail Sheaves/ Tail Rollers
- Stainless Steel or Nylon Sheaves
- Bolt Down Mounting Base
- Load Monitoring System
- Three Coat Marine Paint System
- Third Party Certification

MODEL #	SHEAVE DIAMETER (in)	WIRE SIZE (in)	DIMENSIONS (in)				WEIGHT (lbs)
			A	B	C	D	
MD-1110	10	3/4	11	9	12-1/2	10-1/4	65
MD-1112	12	1	13	11-1/2	14-3/4	12-1/4	105
MD-1114	14	1-1/4	16	12	17-1/2	14-1/2	185
MD-1118	18	1-1/2	18	13-5/8	21-3/8	18-3/8	340
MD-1124	24	2	24	18	29	25-1/4	625

Note: Common inventory sizes listed above, custom sizes available upon request.



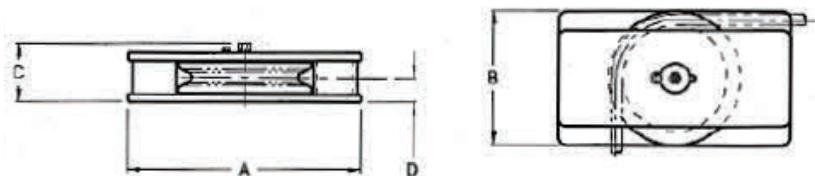
HORIZONTAL GUIDE SHEAVE

OPTIONAL FEATURES

- Stainless Steel or Nylon Sheaves
- Bolt Down Mounting Base
- Load Monitoring System
- Three Coat Marine Paint System
- Third Party Certification
- Customized Design to Suit Your Application

MODEL #	SHEAVE DIAMETER (in)	WIRE SIZE (in)	DIMENSIONS (in)				WEIGHT (lbs)
			A	B	C	D	
MD-1210	10	3/4	17	11	5-3/8	2-3/16	85
MD-1212	12	1	19	12	6-1/2	2-3/4	150
MD-1214	14	1-1/4	21	14	7	2-3/4	200
MD-1218	18	1-1/2	31-1/2	18	8	3-5/16	450
MD-1224	24	2	43	25	9-11/16	3-5/8	975

Note: Common inventory sizes listed above, custom sizes available upon request.



FOUR ROLLER FAIRLEAD

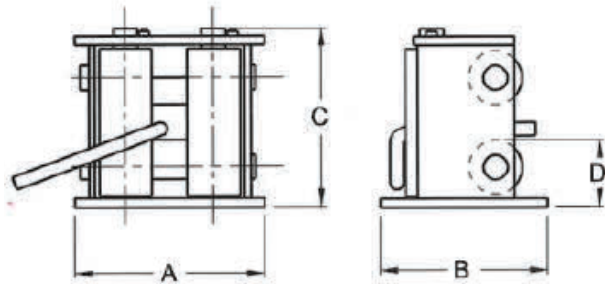
OPTIONAL FEATURES

- Seawater Lubricated Bearings for Underwater Use
- Bolt Down Mounting Base
- Three Coat Marine Paint System
- Third Party Certification
- Customized Design to Suit Your Application



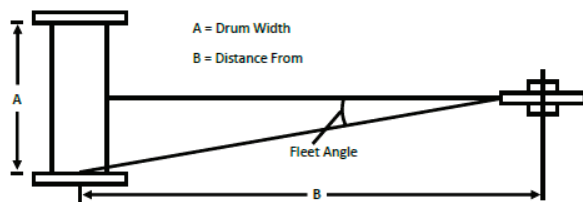
MODEL	SWL (MT)	MAX WIRE SIZE (IN)	DIMENSIONS (IN)				WEIGHT (LBS)
			A	B	C	D	
FR4-2	6	1/2	12	5-1/2	10	3-1/4	85
FR4-4	10	3/4	18	9	15	5-1/8	310
FR4-6	40	1-1/4	23-1/2	19	21-1/4	7-1/2	830
FR4-8	70	1-3/4	32	17	27	9-3/8	1800
FR4-10	100	2-1/4	40	21	35	15-1/2	3350

Note: Common inventory sizes listed above, custom sizes available upon request



When setting up your winch, ensure a proper fleeting angle so the wire rope is spooled back onto the winch uniformly. The fleet angle is important to ensure the lifespan of the wire rope and the safety of the operator. To achieve this, a sheave must be placed far enough away from the drum for the angle between the centerline of the drum and the flange, with respect to the sheave, to be <math><1.5^\circ</math>.

IMPORTANT: Before installation see maintenance and operations manual for additional warnings and precautions. This equipment is not to be used for lifting, supporting, or transporting people or lifting or supporting loads over people. Line speed and pull performance on our rental fleet is estimated on manufacturer specifications. Consult manufacturer for exact line speeds and pull. All quotes are subject to products availability, prior sale or other disposition. All details are believed correct, but without guarantee.



INFO NEEDED TO SIZE WINCH

- Diameter of Wire Rope
- Length of Wire Rope Per Drum
- Amount of Line Pull Required Including at What Position on the Drum
- Type of Control Desired, Air/Manual
- Application or Use

FLEETING DISTANCE GUIDELINES

To find the minimum distance required to the first sheave,

1. Take the Distance Between the Drum Flanges, Given in Inches on the Spec Sheet
2. Divide By 24 to Get Half the Drum Width and Convert to Units of Feet
3. Divide Again By 0.0262
4. The Result is The Minimum Fleeting Distance in Feet

BLOCKS



PRODUCT DETAILS

MANUFACTURER: Rope Block / Skookum “snatch style”

MODELS: Range varies from 12” to 24” (22T-85T)

RENTAL RATE: \$300 - \$600 (RENTAL)

USES: To increase lifting (cranes) and pulling capacity or change direction of line pull for winches used in marine, pile driving, construction, timber and other industrial industries.

COMPLIMENTARY PRODUCTS: Shackles, Wire Rope, Slings, Synthetic Rope, Bales, Swivel Hooks, Hook Blocks

PERKS AND FEATURES

- Rope Block Brand
 - Safety With Removable Side Plate to Load Wire Onto Sheave
 - Heavy Plate Construction For Job Site Abuse.
 - Bronze Bushings For Heavy and Slow Lifts and Low Lubrication Environments.
 - Typically, 1 1/8” to 2” Wire
- Skookum Brand
 - Lighter and More Compact While Maintaining Same Capacity
 - Tapered Bearings for Higher Speed / Faster Lifts.
 - Typically, 1 1/8” to 2” Wire
 - Open Side Plates Make Unit Lighter, But Not as Safe as Solid Side Place

QUESTIONS FOR CUSTOMERS

- Fixed or Swivel Bale?
- What Size Wire Rope Are They Using? (Wire Size Determines Size of Block)
 - D/D Ratio; Engineering Specs 32:1, MFG Specs 16:1
- What Type of Environment Will it Be Used in, Salty Sandy?
 - Sealed Bearings
- Is There a Physical Size Constraint?
- With or Without Hook Swivel

APPLICATION

- Construction Building
- Barge Application
- Marine Applications
- Logging
- Demolition
- Material Handling
- Hoisting

ANCHORS



GENERAL INFORMATION ON ANCHORS AND ANCHOR BEHAVIOR

A. HOLDING EFFICIENCY

Holding power/anchor deadweight = holding efficiency, a value used to compare the various anchor types.

B. DRAG

The distance required for the anchor to be pulled over the bottom before attaining a certain holding power.

C. CONTINUOUS DRAG

Reached at a maximum holding power, when the anchor starts to slip but keeps its stability and holding power.

D. TRIPPING

The moment when the anchor rises to stand on its fluke points.

E. STABILITY

Remaining in the required position or recovering it, if necessary.

F. STATIC STABILITY

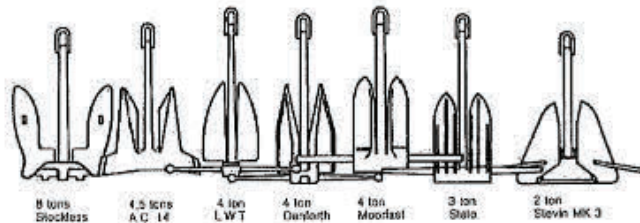
Stability of the anchor which enables it to penetrate the soil at the moment of tripping.

G. DYNAMIC STABILITY

Degree of stability during continuous drag.

Anchors

Anchors with identical holding power drawn at the same scale, thus showing the difference in weight



WORKING LOAD OF ANCHOR (60% OF CONTINUOUS DRAG)		24,000	34,000	46,000	60,000	75,000
CONTINUOUS DRAG POWER		40,000	56,000	76,000	100,000	125,000
WEIGHT OF ANCHOR NEEDED TO PROVIDE CONTINUOUS DRAG UNDER PRESENT SOIL CONDITIONS	20xWEIGHT	2,000	3,000	4,000	5,000	6,000
	15xWEIGHT	3,000	4,000	5,000	6,000	8,000
	10xWEIGHT	4,000	6,000	7,500	10,000	12,000
	5xWEIGHT	8,000	12,000	15,000	20,000	25,000
WORKING LOAD OF ANCHOR (50% CHAIN B.L.)		23,800	36,850	47,050	64,500	77,500
CHAIN STUD LINK GRADE 2	DIA.	3/4	15/16	1-1/8	1-1/4	1-3/8
	BREAK LOAD PROOF LOAD	47,600 34,000	73,700 52,600	94,100 67,200	129,000 92,200	155,000 111,000

92,000	111,000	131,000	153,000	176,000	201,000	227,000	255,000	285,000	314,000	346,000
154,000	185,000	218,000	255,000	293,000	335,000	379,000	425,000	476,000	524,000	578,000
7,000	9,000	10,000	12,000	15,000	15,000	20,000	20,000	22,000	25,000	30,000
10,000	12,000	14,000	16,000	20,000	20,000	30,000	30,000	35,000	35,000	40,000
15,000	18,000	22,000	25,000	30,000	35,000	40,000	42,000	47,000	52,000	58,000
30,000	40,000	45,000	50,000	—	—	—	—	—	—	—
91,750	114,500	132,000	159,000	178,500	209,000	231,000	253,500	289,000	314,000	339,500
1-1/2	1-11/16	1-13/16	2	2-1/8	2-5/16	2-7/16	2-9/16	2-3/4	2-7/8	3
183,500	229,000	264,000	318,000	357,000	418,000	462,000	507,000	578,000	628,000	679,000
131,000	166,500	188,500	222,000	255,000	299,000	330,000	363,000	413,000	449,000	485,000

NOTE:

Anchor holding power varies according to soil conditions, scope & attachments. Consult your local marine engineer for your precise requirement. This chart is to be used as a general guide line only.

GENERAL INFORMATION

ON ANCHORS AND ANCHOR BEHAVIOR CONT.

HOLDING POWER

Holding power is determined by the mass of the displaced soil. Therefore an anchor with the largest fluke area and deepest penetration will perform best, because it utilizes the largest displacement of soil

PENETRATION

For good penetration the shape of an anchor must be as streamlined as possible to cause less resistance and no obstructing parts may project perpendicular to the pulling direction.

The shank must be as sharp as possible in order to prevent sliding over the bottom.

STABILITY

Stability of an anchor has to be maintained under all circumstances, otherwise it will fall on its side and will not penetrate. Stability depends on:

A. the ratio of the length of the fluke part in front of the hinge to the total length of the shank.

B. use of stock-stabilizer; an anchor must hang itself into the right position. Without the stock-stabilizer an anchor tends to fall on its side, so no penetration and no stability are achieved. In hard soil the anchor will start turning and slide over the bottom.

C) sharpness of the fluke points; if the fluke points are blunt, an anchor will ride on its points and fall on its side.

The fluke has to be as smooth as possible in order to prevent deforming friction between fluke and shank. Conforming will influence the fluke/shank function, and in unfavorable circumstances may cause an anchor to break out.

Experience proves that an adjustable fluke/shank angle will give the best results; for sand it should be 32 degrees and for mud 50 degrees.

CHAIN SIZE		DIMENSIONS				TEST REQUIREMENTS						NO. OF LINKS PER 15 FM SHOT
						GRADE 1		GRADE 2		GRADE 3		
in	mm	LINK LENGTH A	LINK LENGTH B	LENGTH OVER 5 - LINKS C	WEIGHT PER 15 FM SHOT	PROOF LOAD	BREAK LOAD	PROOF LOAD	BREAK LOAD	PROOF LOAD	BREAK LOAD	
1/2	13	3	1-13/16	13	225	10,685	15275	15275	21930	21930	30,555	535
3/4	19	4-1/2	2-5/8	16-1/2	480	23,800	34,000	34,000	47,600	47,600	68,000	357
1	25	6	3-9/16	22	860	41,800	59,700	59,700	83,600	83,600	119,500	267
1-1/8	29	6-3/4	4	24-3/4	1,080	52,600	75,000	75,000	105,000	105,000	150,000	237
1-1/4	32	7-1/2	4-1/2	27-1/2	1,350	64,500	92,200	92,200	129,000	129,000	184,000	213
1-3/8	34	8-1/4	4-15/16	30-1/4	1,630	77,500	111,000	111,000	155,000	155,000	222,000	195
1-1/2	38	9	5-3/8	33	1,940	91,700	131,000	131,000	183,500	183,500	262,000	179
1-3/4	44	10-1/2	6-5/16	38-1/2	2,590	123,500	176,000	176,000	247,000	247,000	352,000	153
2	51	12	7-3/16	44	3,360	159,000	227,000	227,000	318,000	318,000	454,000	133
2-1/4	58	13-1/2	8-1/8	49-1/2	4,250	198,500	284,000	284,000	396,000	396,000	570,000	119
2-1/2	64	15	9	55	5,270	242,000	346,000	346,000	484,000	484,000	692,000	107
3	76	18	10-13/16	66	7,650	340,000	485,000	485,000	679,000	679,000	970,000	89
MD-1124	24	2	24	18	29	25-1/4	625	24	18	29	25-1/4	625

Mooring Estimator: Summary Report For Internal Quotation Purposes Only, Not for Distribution

DISCLAIMER

This Mooring analysis provides a basic evaluation based upon the project parameters submitted to Rasmussen Marine, LLC. D/B/A Rasmussen Equipment Company. There are project, worksite conditions and variables which are unforeseeable and beyond the control of Rasmussen Marine, LLC, and therefore, we cannot accept responsibility and specifically deny any liability for the safe use of Rasmussen Marine LLC's equipment. This analysis is a guideline and does not constitute a guarantee that there will not be circumstances that prevent and do not allow for the intended use of the equipment. Approval of the analysis and ultimate project engineering is the sole responsibility of the contractor/lessee.

SUMMARY

260 x 72 x 15 ft vessel with 2.6-ft draft			
1226 ft	Mooring Line Length, Overall	1.375 inch	Minimum Required Wire Size, 6x19 Class EIPS IWRC Min Req'd Chain Size, Gr 3 Stud Link Chain
61 kips	Maximum Line Tension	1.25 inch	
		Min Req'd Anchor Size	(See "Assumptions - Mooring Equipment") Delta Flipper Danforth LWT Moorfast Stockless (35° movable fluke)
		- kips	
		10 kips	
		10 kips	
		13 kips	
		**21 kips	

INPUTS

Inputs - Vessel

LOA	260 ft	Length overall
BOA	72 ft	Breadth overall
DOA	15 ft	Depth overall
height_cargo	10 ft	Cargo height (or crane cab height, if desired)
height_boom	40 ft	Crane boom height
width_boom	4 ft	Crane boom width
draft	2.57 ft	Design draft
	OK	<i>Barge draft must be less than barge depth</i>

Inputs - Environment (Continued)

Water Parameters		
depth_max	100 ft	Max water depth
	OK	<i>Water depth must be greater than draft</i>
depth_min	85 ft	Min water depth
	OK	<i>Max water depth must be greater than min water depth</i>
	OK	<i>Water depth must be greater than draft</i>
V _{current long}	1.5 kts	Current velocity stern - bow
	2.53 fps	
V _{current 45}	1.5 kts	Current velocity diagonal
	2.53 fps	
V _{current trans}	1.5 kts	Current velocity port - stbd
	2.53 fps	

Inputs - Environment

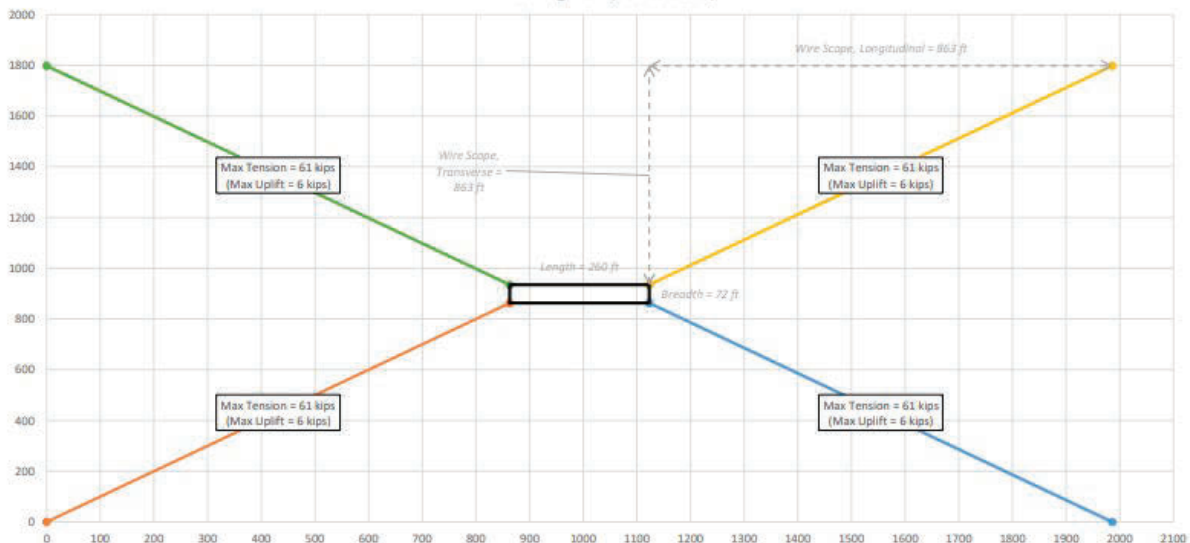
Soil Parameters

soil_type **Sand or Stiff Clay** Material at river or lake bottom

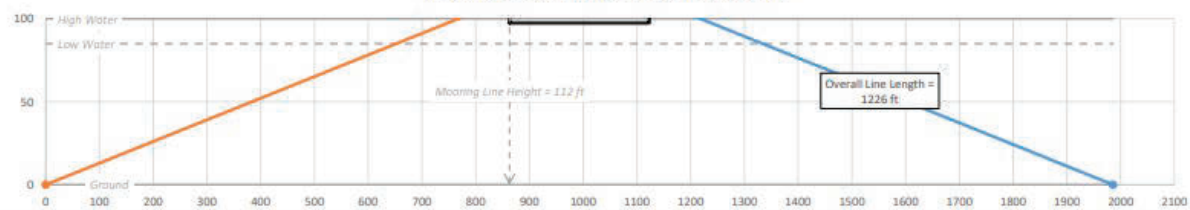
Wind Parameters

V_{wind} **40** mph Wind velocity (Gusts not considered)
58.7 fps Commonly used velocity is 25mph, or 40mph for USACE

Mooring Plan (not to scale)



Mooring Profile (at High Water, not to scale)



ANCHORS - SIZE FROM 100 - 34,000LBS



Class F Anchors

Stockless

Anchor with square shank, no shock stabilizers. The stabilizing resistance is built into the crown.

Approximate efficiency range of 4-6x their weight

Best uses: All soil conditions, low holding power



USES:

A streamlined derivation of the traditional Admiralty Anchor (1821) and is used aboard large ships. It has two flukes that pivot on the same plane perpendicular to the shank. The weight of the shank and accompanying chain, or the shank angled under tension, keeps the anchor lying flat on the sea floor.

PERKS AND FEATURES

- Simple Design With No Unnecessary Parts
- Easy to Handle and Store
- Simple of Its Design Makes Breaking It From the Bottom an Easy and Reliable Procedure
- The Shank Being Able to Pivot While the Flukes Are Embedded in the Sea Floor Minimizes Wear on Attachment Hardware
- The Anchor Generally Will Still Hold Even if the Wind and or Current Changes Direction and Causes the Vessel to Pull on the Anchor From a Slightly Different Angle
- Due to the Simple Design of the Stockless Anchor, It Is Capable of Free Falling Much Faster In Water Than Other More Bulky Anchor Types



Class D Anchors

Danforth, Workboat, & LWT

Anchors with hinge and stabilizers at the rear and relatively long shanks and stabilizers

Have an approximate efficiency range of 8-15x their weight

Best uses: Hard sand or mud where flukes can dig in.



USES:

The Danforth anchor offers excellent holding in mud and sand but performs poorly on rock, grass, or hard bottoms, making it effectively a mud-/sand-only anchor, which suits most common seabeds

PERKS AND FEATURES:

The Danforth anchor features a hinged stock at the crown with two large flat triangular flukes that orient and dig into the seabed, with tripping palms helping tip the flukes in. It excels in mud and sand but struggles to penetrate weed, kelp, rocky, hard sand, or clay bottoms, making it effectively suited only for soft mud/sand conditions.

ANCHORS - SIZE FROM 100 - 34,000LBS CONT.

Class C Anchors

Delta Flipper

Anchors with an open crown hinge near the center of gravity and relatively short shank and stabilizers or built in stabilizers

Approximate efficiency range of 14-26x their weight

Best uses: Offshore work, unknown soil conditions,

high holding power



USES:

The Flipper Delta anchor is a high-holding-power marine anchor widely used in offshore and dredging projects due to its easy handling, rapid penetration, and reliable performance across varied soil types, including sand, clay, gravel, and softer seabeds. Its open, streamlined design allows smooth seabed entry and helps maintain holding capacity without rotation or dragging. Constructed from high-tensile materials and approved by major classification societies, it's suited to demanding offshore, ship, and infrastructure anchoring applications.

PERKS AND FEATURES

- Excellent Efficiency When Compared to Other Models' Weight vs Holding Power Ratios
- Doesn't Rotate Which Results in no Loss In Holding Capacity Nor Dragging of the Anchor Position
- Easy to Dismantle (Needed to Transport the Larger Anchors)

APPLICATION

- Fixed Mooring
- Pipelay Barges
- Multi-Purpose Construction Vessel
- Hold Back for Pulling Applications Where a Fixed Foundation Isn't Present
- Offshore Rig Mooring
- Dive Vessels

COMPLIMENTARY PRODUCTS USED IN CONJUNCTION WITH OUT ANCHORS INCLUDE

- Wire Cable/Rope Rigging
- Anchor Chain
- Buoys
- Shackles
- Chain Connector Link
- Chain Swivel Forerunner
- Chain Per Link
- Wire Rope w/ Customized Connection on End
- Anchor Winches

MOORING BUOYS



SPHERICAL BUOYS

Diameters from 28" - 58"

58" Specs

- Buoyancy: 3000lbs
- Water displaced: 3675lbs
- Weight: 675lbs

42" Specs

- Buoyancy: 970lbs
- Water displaced: 1270lbs
- Weight: 300bs

28" Specs

- Buoyancy: 370lbs
- Water displaced: 450lbs
- Weight: 80lbs



Peg, Navigation and other buoys available for purchase or rent!



CYLINDRICAL BUOYS

Diameters from 6' - 8'

Lengths from 7' - 15'

6' x 12' Specs

- Buoyancy: 15750lbs
- Water displaced: 20700lbs
- Weight: 4950lbs

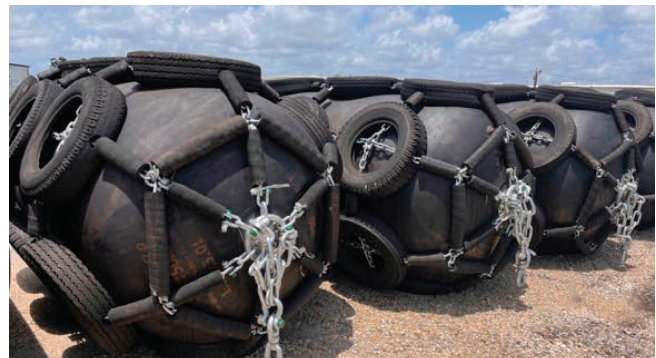
8' x 14' Specs

- Buoyancy: 27670lbs
- Water displaced: 45270lbs
- Weight: 8960lbs

FENDERS

P2 5' Bumper w/Bitts Female, P2 7' Bumper w/Bitts Female, Foam Filled Fenders (6'x12' and 8'x14'), Pneumatic Fenders w/Chains and Tires (4'x8' and 5'x10'), and Pneumatic Fenders 20"x36"

MANUFACTURERS: Poseidon Barge, Sea Guard, and Shouguang Marine



SECTIONAL BARGES

Rasmussen Equipment and Poseidon Barge deliver North America's most comprehensive, scalable, and reliable marine equipment solutions. From engineered winch systems and mooring packages to new sectional barges and nationwide rental support, our combined capabilities help contractors complete complex marine and civil construction projects with confidence, efficiency, and speed.

For short-term needs or supplemental capacity, Poseidon customers can access Rasmussen's nationwide rental fleet. This synergy reduces freight costs, accelerates delivery, and provides unmatched flexibility for contractors managing fluctuating project demands.



SECTIONAL BARGES - 4FT NARROW

Poseidon offers a narrow 4FT barge built to the same strength and versatility as its bigger family members. These barges are available in the P2 Series style connection. These barges are legal width for trucking – no special permits required!

Using customer inputs, the MES team can provide a basic stability analysis through our Bearfan program. The customer will receive a PDF document that lists all the weights, pick radius, pick weight, trim, list, draft and free board. This document helps ensure proper planning has taken place by the customer and allows for success.

POSEIDON P2 SERIES

This sectional barge is the 4' version of the 5' and 7' P2 Series barge. It utilizes the familiar Male Lug and Female Connection with lock bars. The P2 series comes in 15' and 30' sections.

P2 NARROW SERIES WEIGHT

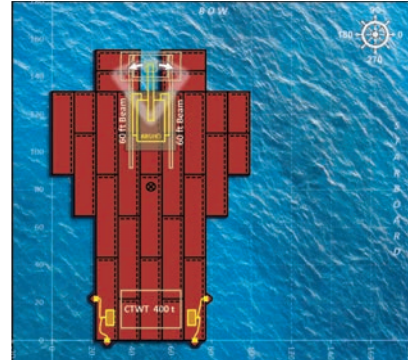
- P2 Narrow 7.5' x 4' x 30' Barge – 15,600 lbs.
- P2 Narrow 7.5' x 4' x 15' Barge – 8,500 lbs.

P2 NARROW SERIES CAPACITY

- P2 Narrow 7.5' x 4' x 30' Barge – 11,400 lbs. @ 2.0 ft draft
- P2 Narrow 7.5' x 4' x 15' Barge – 4,800 lbs. @ 2.0 ft draft

SPUDS

- 20" dia x 1/2" Wall Steel Spuds in Lengths From 20' to 80'
- Pockets Attach to Free Connectors



SECTIONAL BARGES - 5FT TALL

The 5FT Tall Barge is a staple in the Poseidon Sectional Barge fleet. Poseidon manufactures 3 different connection styles to accommodate compatibility with most market offerings a customer may own.



FEATURES

- 1/4" Steel Plate Deck Construction with 25,000 PSF Concentrated Load Capacity
- Standard 18" dia Deck Hatches Installed
- Exterior Coated with Baril Zinc Rich Primer and Baril Top Coat for Maximum Corrosion Protection
- Zinc Anodes are Welded to the Exterior for Additional Corrosion Protection.

POSEIDON P1 SERIES

This sectional barge has cast connectors on 5' centers down each side and on the end of the section. Each casting features a male nub and a female indentation. When the next barge or accessory is mated to it, the castings fit together. Then a 5' "Dogbone" Connector Pin is installed to secure the sections to one another.

A unique feature of the P1 Series barges is that they are completely symmetrical in casting placement. There is no "wrong direction" when setting them into the water for a deck assembly. Castings will line up in any direction.

P1 SERIES WEIGHT

- P1 10' x 5' x 40' Barge – 23,300 lbs.
- P1 10' x 5' x 20' Barge – 12,800 lbs.
- P1 10' x 5' x 10' Rake – 6,500 lbs.

P1 SERIES CAPACITY

- P1 10' x 5' x 40' Barge – 39,600 lbs @ 2'6" Draft
- P1 10' x 5' x 20' Barge – 18,800 lbs @ 2'6" Draft

SPUDS

- 18" dia x ½" Wall Steel Spuds in Lengths from 20' to 80'

The P1 SERIES 5FT Barge is light enough to ship 2 pcs of 10'x5'x40' sections per overwidth aluminum stepdeck trailer! (That's double what the competition can ship per truck saving the contractor freight costs)



POSEIDON P2 SERIES

This sectional barge is the 5' version of the 7' P2 Series barge. It utilizes the familiar Male Lug and Female Connection with lock bars that are compatible with other 5' sectionals available in the marketplace

P2 SERIES WEIGHT

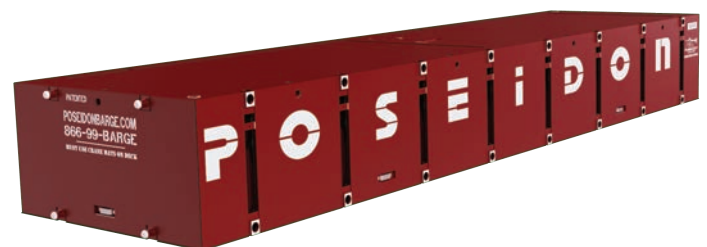
- P2 10' x 5' x 40' Barge – 23,400 lbs.
- P2 10' x 5' x 20' Barge – 12,900 lbs.
- P2 10' x 5' x 10' Rake – 6,500 lbs.
- P2 10' x 20' x 5' Ramp – 10,700 lbs.

P2 SERIES CAPACITY

- P2 10' x 5' x 40' Barge – 39,000 lbs @ 2'6" Draft
- P2 10' x 5' x 20' Barge – 18,200 lbs @ 2'6" Draft

P2 SERIES CAPACITY

- 18" dia x ½" Wall Steel Spuds in lengths from 20' to 80'
- 20" dia x ½" Wall Steel Spuds in lengths from 20' to 80'



POSEIDON P3 SERIES

The Poseidon P3 barge utilizes a rail connection system with a series of 5' "nail pins" connecting sections together or securing accessories. This sectional barge is compatible with other 5' sectionals available in the marketplace.

P3 SERIES WEIGHT

- P3 10' x 5' x 40' Barge – 27,800 lbs.
- P3 10' x 5' x 20' Barge – 16,400 lbs.

P3 SERIES CAPACITY

- P3 10' x 5' x 40' Barge – 36,000 lbs @ 2'6" Draft
- P3 10' x 5' x 20' Barge – 18,200 lbs @ 2'6" Draft

SPUDS

- 18" dia x 1/2" Wall Steel Spuds in Lengths From 20' to 80'
- External Mount Spud Pockets That Can Be Placed Anywhere There is a Free Set of Connections.



SECTIONAL BARGES - 7FT TALL

The robust Poseidon 7' Sectional Barges come in 20' and 40' lengths allowing for unique configurations based on a contractor's needs. They are used for dredge platforms, drill rig decks, large crane barges or heavy material/equipment transportation decks.



FEATURES

- 1/4" Steel Plate Deck Construction with 25,000 PSF Concentrated Load Capacity
- Standard 18" dia Deck Hatches installed
- Exterior Coated With Baril Zinc Rich Primer and Baril Top Coat for Maximum Corrosion Protection
- Zinc Anodes are Welded to the Exterior for Additional Corrosion Protection

POSEIDON P2 SERIES

The Poseidon 7' barges utilize a Male Lug and Female Connection with lock bar that are compatible with other 7' sectionals available in the marketplace.

POSEIDON P2 SERIES CONT.

P2 SERIES WEIGHT

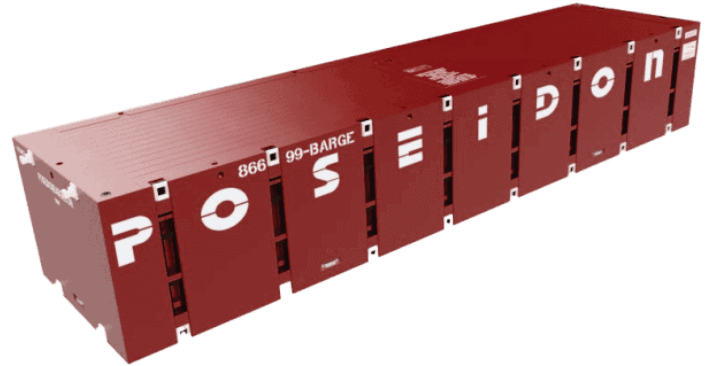
- 10' x 7' x 40' Barge – 33,900 lbs.
- 10' x 7' x 20' Barge – 18,500 lbs.
- 10' x 7' x 10' Rake – 8,750 lbs.
- 10' x 7' x 20' Ramp – 13,000 lbs.

P2 SERIES CAPACITY

- 10' x 7' x 40' Barge – 66,000 lbs @ 4' Draft
- 10' x 7' x 20' Barge – 30,800 lbs @ 4' Draft

SPUDS

- 24" x 1/2" Wall Steel Spuds in Lengths From 20' to 80'
- External Mount Spud Pockets That Can Be Placed Anywhere There is a Free Set of Connections.



The P1 SERIES 5FT Barge is light enough to ship 2 pcs of 10'x5'x40' sections per overwidth aluminum stepdeck trailer! (That's double what the competition can ship per truck saving the contractor freight costs)

SECTIONAL BARGES - 10FT TALL

Poseidon's P-10 was born when a need was recognized while viewing cranes during a trade show. Cranes continually grow larger but often contractors have limited space to float those cranes. The barges had to adapt to accommodate these massive cranes while shrinking their footprint! Poseidon's P-10 does both.



FEATURES

- Patented Heavy Duty Roll Form, HSLA Steel Deck Construction with 25,000 PSF Concentrated Load Capacity
- Standard 18" Dia Deck Hatches with a Ladder on the Interior of the Barge
- Exterior Coated with Baril Zinc Rich Primer and Baril Top Coat for Maximum Corrosion Protection
- Zinc Anodes Are Welded to the Exterior for Additional Corrosion Protection

POSEIDON P10 SERIES

Poseidon's P10 is the largest sectional barge that can travel over US Highways via semi-truck. It comes in 2 lengths: 44' and 22'. The Poseidon P10 series utilizes a Male Lug and Female Connection with lock bar, similar to other Poseidon sectional barges.

P10 SERIES WEIGHT

- 44' x 11' x 10' Barge – 46,200 lbs.
- 22' x 11' x 10' Barge – 25,500 lbs.
- 15' x 11' x 10' Rake – 16,100 lbs.

P10 SERIES CAPACITY

- 44' x 11' x 10' Barge – 100,800 lbs @ 5' draft
- 22' x 11' x 10' Barge – 48,000 lbs @ 5' draft

SPUDS

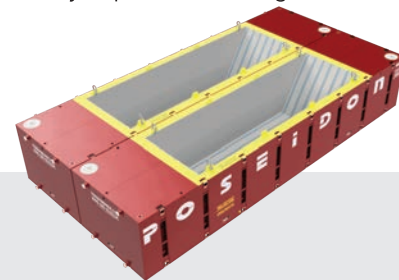
- 24" x ¾" Wall Steel Spuds in lengths from 20' to 80'.
- External Mount Spud Pockets that can be placed anywhere there is a free connection.



SECTIONAL BARGES - HOPPER

The Poseidon 40 yard, 7FT P2 Series Hopper is where innovation and solution merge into one. Our customer base expressed a need for a sectional hopper, and we provided one that has proven to be a very useful tool in dredging, drilling, and material transportation projects. The stable 7ft tall section is most efficiently ran in pairs, conveniently attached using our P2 series connection consisting of the male lug, and female lockbar system. The 40-yard version is the evolution of the initial design, building on the proven success but now available with greater payload capacity. Our customers needed a barge that held more weight, and by redesigning the old style hopper, we have given the customer the ability to place more weight in the barge than ever before.

POSEIDON P2 SERIES



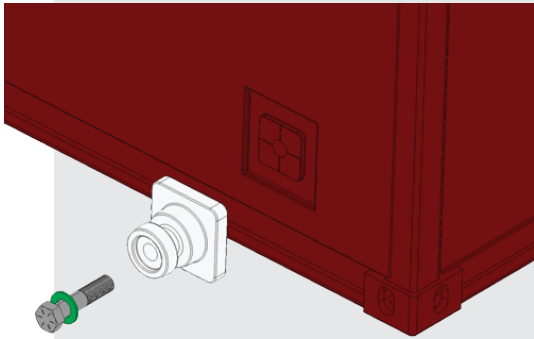
FEATURES & SPECIFICATIONS

- P2-7 Hopper Barges are 10ft Wide x 7ft Tall x 40ft Long
- A Single Section Weighs 37,500 lbs.
- P2-7BP Hopper Barge is Compatible with Standard P2-7 Barges. A Single 40ft X 10ft Hopper Barge Section Can Hold up to 40 Cubic Yards of Material
- 3/8" Plate Thickness for Inner Hopper Walls and Bottom
- Yellow Safety Paint Around the Perimeter of the Open Hopper Bin for a Visual Warning for Personnel to Quickly See When They are Nearing This Zone
- A Capacity of 40 Cubic Yards (Material Weight Dependent)
- Side Drain From the Interior of the Hopper Bin to the Exterior of the Barge for Easy Drainage Once Removed From the Project.
- Shackle Mounting Plates are Reinforced and are 1 3/8" Thick to Avoid Damage in the Field. These Shackles are Used for Lifting the Unit for Transportation or Placing in the Water.
- Standard P2-7 Barges Can Be Connected to the Hopper Sections to Provide Additional Buoyancy for Increased Load Capacity as Required.

SECTIONAL BARGES - P4 ISO

Poseidon created the P4-9 ISO Barge for ease of transportation on railways and container ships. This barge is the exact dimensions of a standard high cube shipping container allowing handling equipment in most rail/shipping yards to be used. The P4-9 ISO Barge also features ISO shipping container corner brackets to make them universal.

This barge has 8 connection points on the 40' side and 2 connections on each end, similar to what is used in the Poseidon P2 Series. The male lugs are removable for easy storage during shipping, allowing the units to be transported using standard ISO barge shipping equipment—by truck, train, or ship—resulting in significant freight cost savings for the customer.



FEATURES & SPECIFICATIONS

- Patented Heavy Duty Roll Form, HSLA Steel Deck Construction with 25,000 PSF Concentrated Load Capacity
- Standard 18" dia Deck Hatches with a Ladder on the Interior of the Barge
- Exterior Coated with Marine Grade Baril Marine Coating

P4 ISO WEIGHT

- 8' x 9' 6" x 40' – 36,300 lbs

P4 ISO CAPACITY

- Capacity: 58,400 lbs at a 5' Draft

SPUDS

- 24" x ¾" Wall Steel Spuds & Spud Pockets
- Pockets Can Be Placed Anywhere There is a Free Connection



DEPTH (ft)	BRAND	SIZES AVAILABLE (ft)	CONNECTION SYSTEM	WEIGHT (lbs)	CAPACITY (lbs @ X' Draft)	DECK (PSF)
4	Poseidon (P1)	7.5 x 15	Rendrag	8,059	9,750 @ 2'	20,000
		7.5 x 30	Rendrag	14,760	19,500 @ 2'	20,000
		10 x 20	Rendrag	12,150	14,210 @ 2'	20,000
		10 x 40	Rendrag	21,700	28,420 @ 2'	20,000
5	Flexifloat (S50)	10 x 20	Flexifloat	-	-	-
		10 x 40	Flexifloat	-	-	-
	Poseidon (P2)	10 x 20	Flexifloat	13,700	17,500 @ 2.5'	20,000
		10 x 40	Flexifloat	23,872	35,000 @ 2.5'	20,000
7	Flexifloat (S70)	10 x 20	Flexifloat	-	-	-
		10 x 40	Flexifloat	-	-	-
	Poseidon (P2)	10 x 20	Flexifloat	16,600	32,000 @ 4.6'	20,000
		10 x 40	Flexifloat	31,200	64,000 @ 4.6'	20,000

SECTIONAL FLOATS - SPUDS & SPUDWELLS

PRODUCT DETAILS



MANUFACTURER: Poseidon

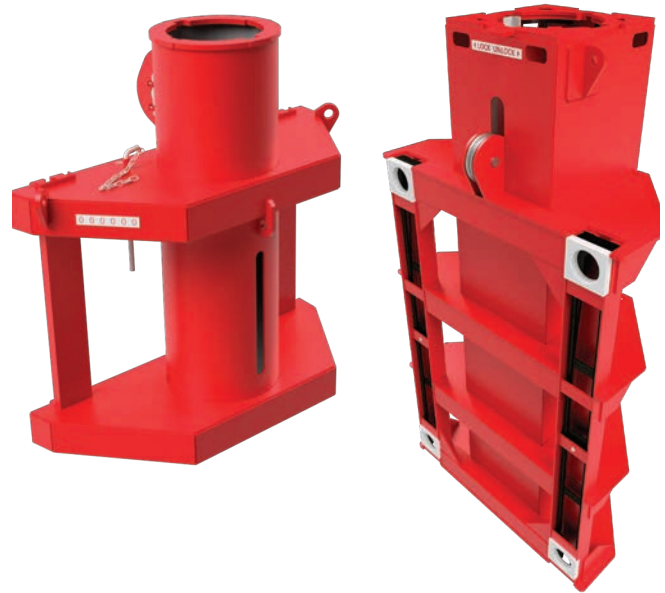
MODELS: Poseidon PI, PII

USES: Anchoring a barge to a particular location. Steel shafts are driven into a sandy bottom and can be raised or lowered with a crane, excavator, or winch.

COMPLIMENTARY PRODUCTS: Direct mount Spud Winches (Pullmaster Hydraulic M-18 /M-25), Horizontal and vertical guide sheaves (1-vertical sheaves for the built-in sheaves on the 7' & 5'), Hydraulic Power Units (for spud winches) Tier 4? CA

PERKS AND FEATURES

- 7' PII / S70 Float Spudwells Available For 40' & 60' x 24" Diameter Spuds with Flexifloat Connections. (Some 30' & 32')
- 5' PII / S70 Float Spudwells Available for 40' x 20" Diameter Spuds with Flexifloat Connections
- 5' PI Float Spudwells Available for 40' x 18" Diameter Spuds With Rendrag Connections
- 4' PI Narrow Float Spudwell Available for 40' x 18" Diameter Spuds with Rendrag Connections
- Spuds Have Turning Sheaves and Guide Rails and Most Sheaves Accept 7/8" Wire
- Spuds are Typically 40 in Length, But We Do Carry up to 60' and Have Some Shorter Than 40'
- Spudwell Necks Can Be up to 3' in Length and Must Be Considered in Addition to The Sectional Barge Depth to Calculate the Length of The Spud

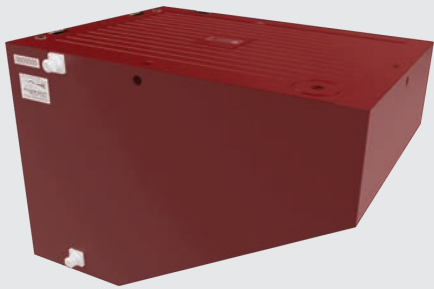


APPLICATION

- Sectional Barges



SECTIONAL FLOATS - RAKES



PRODUCT DETAILS

MANUFACTURER: Poseidon

MODELS: P1, P2

USES: The rakes are manufactured by our float manufacturers and are designed to allow for the creation of a raked end of a platform to facilitate cutting through water.

COMPLIMENTARY PRODUCTS: Loading Ramps, Sectional Barges, bolt-on cleats

PERKS AND FEATURES

- They are Available in the Following Sizes (Lxwxh), 8.3' x 7.6' x 4', 10' x 10' x 4', 10' x 10' x 5' And 15' x 10' x 7'.
- Available for Both P1 Narrow & Standard Width Floats for 4' Deep Platforms.
- Available for Both P1 & P2 Floats for 5' Deep Platforms.
- These Are Easy to Assemble to an Existing Platform Since They Use the Same Connection Systems and Only Need to Be Connected to the Ends of A Platform. The Sides of the Rakes and Tips Do Not Have Connectors.

SECTIONAL FLOATS - RAMPS



PRODUCT DETAILS

MANUFACTURER: Poseidon

MODELS: P1, P2

USES: The ramps are manufactured by our float manufacturers and are designed to allow for the creation of a ramped end of a platform to facilitate cutting through water or to act as a loading ramp.

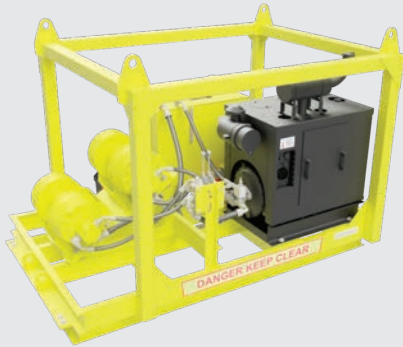
COMPLIMENTARY PRODUCTS: Rakes, Crane Ramps are often confused with barge/float ramps. We will cover those in a later discussion soon. Sectional Barges, Bolt-on cleats

PERKS AND FEATURES

- They are Available in the Following Sizes (Lxwxh), 20' x 10' x 5' and 20' x 10' x 7'.
- Available for Poseidon P2 But Not For P1 (Rendrag Style) Barges
- Available for Both for 5' & 7' Deep Platforms.
- These Are Easy to Assemble to an Existing Platform Since They Use the Same Connection Systems. The Sides of the Ramps and Tips Do Not Have Connectors.
- Poseidon Does Not Rate Their Ramps

ACCESSORIES

HYDRAULIC POWER UNIT - COMBO W/ WINCHES



PRODUCT DETAILS

MANUFACTURER: Poseidon

MODELS: P-65

USES: The P-65 hydraulic power unit and winches are a simple solution for customers to have a compact unit. It comes equipped with two H12 winches that can support up to 20"x40' or 18"x50' spuds.

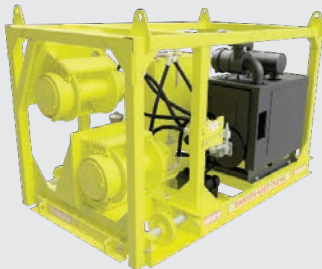
COMPLIMENTARY PRODUCTS: Spuds / Spudwells, Horizontal and vertical guide sheaves (MD-1210 & MD-1110 are grooved for wire up to 3/4" in diameter.)

PERKS AND FEATURES

- All Components in One Compact Unity; 9.3ft L. x 6ft. H, Approx. 4600 lbs.
- Less Welding of Components to the Deck
- 65 H.P. Tier IV Diesel Engine W/ (2) Pullmaster H12 Winches; 12,000 lb Lines Pull, 3000 lb Lowering Capacity
- Can Spool up to 222' of 5/8" Wire on Each Winch Drum
- Tow Joystick Controls Mounted at Power Unit Allow for Ease of Use

APPLICATION

- Sectional Barges



PRODUCT DETAILS

MANUFACTURER: Poseidon

MODELS: P-100

USES: The POSEIDON® P100 SPLIT HYDRAULIC DOUBLE DRUM WINCH is designed to lift 24" diameter spuds up to 80' long, depending on the conditions. 3/4" cable can be purchased from MES. May ship separately, will quote spooling on to winch when possible.

PERKS AND FEATURES

- Each Drum Holds up to 500' of 3/4" Steel Cable
- Split Design Feeds Cable Out of Opposite Ends of the Winch Frame, Reducing the Need for Snatch Blocks
- Features Pullmaster H18 Rapid-Reverse Hydraulic Winch Units
- 3.4b 120 HP Tier 4
- 120 Gallon Reservoir with Sight Gauge
- Uses Chevron Clarity Hydraulic Oil
- 18,000 lbs Bare Drum Line Pull @ 104 ft/min
- Key Start with 2 Section Manual Control Valve

BARGE - PUSHER



PRODUCT DETAILS

MANUFACTURER: Poseidon

MODELS: 97 HP / 200 HP

USES: Reposition or move 4' or 5' sectional barges on flat water.

COMPLIMENTARY PRODUCTS: Sectional floats-different sizes, Rakes and ramps (to cut through water)

PERKS AND FEATURES

- 97 HP Units
 - 15'
 - Weld On
 - Single Thruster
 - Used for Primarily 4' and 5' Floats
 - Up to 40' x 80' (4'-5') Platforms Depending on Total Weight (More Weight = Less Effective)
- 200 HP Units
 - 20'
 - Weld On
 - Single Thruster
 - Used Primarily for 4' and 5' Float
 - Can Be Used for 7' Floats
 - Prop May Not Be Low Enough Below the Water Line
 - Prop Can Cavitate and Create Vortexing Leading to Reduced Power
 - Up to 60 x 120 (4'-5') Platforms Depending on Total Weight (More Weight = Less Effective)

APPLICATION

- Used as an Alternative to Renting a Truck-Able Tug
- Used to Reposition or Move Sectional Barge Platforms

CRANE RAMPS



PRODUCT DETAILS

MANUFACTURER: None

MODELS: Sizes

USES: We picked these up on auction. No known manufacturer.

COMPLIMENTARY PRODUCTS: Floats

PERKS AND FEATURES

- They are Available in the Following Sizes (Lxwxh), 30' x 5' x 12" & 45' x 5' x 2'
- They Do Not Use a Connection System. They are Simply Laid Onto the Platform.
- They are Always Rented in Sets of (2). We Have One Set of Each Size.
- No Assembly Required.
- These Are Heavy! The 30' Ramps Are 10,000 lbs Each, So a Set is 20,000 lbs. They 45' Ramps are 30,190 lbs Each, So a Set is 60,380 lbs (1 Per Trailer for the 45' Ramps)
- These are Unrated. See Notes Below on Capacities.
- Can Be Used with Any of Our Floats.

LOAD MONITORING

CROSBY STRAIGHTPOINT RADIOLINK PLUS

PERKS AND FEATURES

- Capable of Weighing and Dynamic Load Monitoring in Capacities From 1t to 500t
- Constructed of Lightweight, Aerospace Grade Aluminum
- Environmentally Sealed to IP67 or NEMA6
- Frequency: Proprietary 2.4 GHz Wireless
- Update Rate of 3Hz and Can Be Easily Configured to Run at Industry-Leading Speeds of up to 200Hz
- Remote on/off From Handheld Display or Software
- Atex Zones 0, 1 & 2 Available
- Design Validated by FEA
- 2-Year Warranty
- DNV-GL Type Approval
- Complies with ASME B30.26
- Bluetooth Option is Available and is Supplied with a Free HHP App for iOS and Android
- Battery Type: Handheld 2 x AA / Loadcell 4 x AA
- Battery Life: Handheld - 40 Hours / Loadcell 1,200 Hours Continuous (Loadcell 500 Hours if Bluetooth)
- Display Type: 240 x 128 Pixel Multi-Line Dot Matrix with Backlight
- Operating Temperature: 14°F to 122°F
- Accuracy: ±0.1% of Full Scale
- System Range (Max): 3,280 ft (328 ft if Bluetooth), (1,640 ft if ATEX/IECEX)



STRAIGHTPOINT RADIOLINK PLUS (RLP)														
STOCK NO.	MODEL	CAPACITY (lb)	RESOLUTION (lb)	WEIGHT (lb)	DESIGN FACTOR	DIMENSIONS (in)							CROSBY SHACKLE	
						A	B	C	D	OE	F	G		
2789084	RLP1T	2,200	1	3.3	12:1	8.03	1.69	4.09	5.75	0.96	1.89	0.75	G2130	1019490
2789089	RLP2T5	5,500	2	3.3	7:1	8.03	1.69	4.09	5.75	0.96	1.89	0.75	G2130	1049490
2789094	RLP6T5	14,300	2	5.3	7:1	9.8	1.69	4.45	6.5	1.5	2.6	1.26	G2130	1019533
2789082	RLP12T	26,000	5	8.2	7:1	12.01	1.85	4.45	7.6	1.87	-	-	G2130	1019597
2789088	RLP25T	55,000	10	11	5:1	13.39	2.36	4.53	8.46	2.17	-	-	G2130	1019659
2789091	RLP35T	77,000	10	19	5:1	15.47	2.95	4.96	8.86	2.36	-	-	G2130	1019677
2789093	RLP55T	120,000	20	28.7	5:1	16.69	2.95	7.09	9.06	2.99	-	-	G2140	1021156
2789095	RLP75T	165,000	20	35.3	5:1	18.5	2.95	7.95	10.24	2.99	-	-	G2140	1021174
2789081	RLP100T	220,000	100	75	5:1	23.94	3.9	10.04	12.6	4.29	-	-	G2140	1021192
2789083	RLP150T	330,000	100	101.4	4:1	26.38	3.9	11.93	14.14	4.29	-	-	G2140	1021218
2789085	RLP200T	440,000	200	180.8	5:1	27.56	5.67	13.78	13.78	5.71	-	-	G2140	1021234
2789087	RLP250T	550,000	200	180.8	4:1	27.56	5.67	13.78	13.78	5.71	-	-	G2140	1021243
2789090	RLP300T	660,000	200	260	5:1	31.73	5.91	16.77	13.78	6.3	-	-	G2140	1021252

CROSBY RUNNING LINE DYNAMOMETER

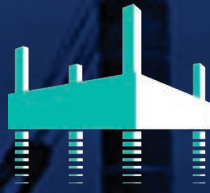
The TIMH range is a wireless running line tensiometer or RLTM built with dockside, marine, offshore, towage, and salvage applications in mind.

PERKS AND FEATURES

- Fully Constructed From Corrosion-Resistant Stainless Steel
- Large Range of Capacities to 150t and Wire Rope Diameters up 3½ in
- Measures Tension Force at Speeds up to 65ft/min
- Five-Wheel Design, Improving Accuracy
- Maintenance-Free Heavy Duty Bushes
- Options for Lineout and Speed Available
- Software Available to Data Log and Monitor or Analog Outputs
- Cabled System or Wireless Bluetooth Option are Available and is Supplied with a Free HHP App for IOS and Android
- IP67 or NEMA6 Loadpin
- Design Validated By FEA
- Battery Type: 4 x AA Alkaline
- Battery Life: Wireless Version 1,200 Hours Continuous
- Operating Temperature: 14°F to 122°F
- Accuracy: ±2% of Full Scale
- Frequency: 2.4 GHz
- System Range (Max): 2,300 Feet
- Data Rate: 3 Updates Per Second
- Line Out and Speed: Via SW-MWLC Software



STRAIGHTPOINT RUNNING LINE DYNAMOMETER (RLTM)											
STOCK NO.	MODEL	CAPACITY (lb)	RESOLUTION (lb)	ROPE DIAMETER (in)		WEIGHT (lb)	MAXIMUM SPEED (ft per minute)	DIMENSIONS (in)			
				MIN	MAX			A	B	C	D
2789054	MTIMH10TRD	22,000	20	5/32	3/4	20	164	16.62	12.90	5.98	1.40
2789136	TIMH10TRD	22,000	20	1/2	3/4	198	65	34.05	26.53	12.95	4.37
2789139	TIMH25TRD	55,000	50	5/8	1	190	65	34.05	26.53	12.95	4.37
2789144	TIMH56TRD	123,200	100	1-1/8	1-1/2	179	65	34.05	26.53	12.95	4.37
2789146	TIMH80TRD	176,000	200	1-5/8	2	168	65	34.05	26.53	12.95	4.37
2789270	TIMH150TRD	330,000	500	2	3-1/2	506	65	49.20	41.33	16.37	6.02



POSEIDON JACKUP

AN MES COMPANY

MES-C7 | SELF-ELEVATING PLATFORM



Versatile and Heavy-Duty Platform

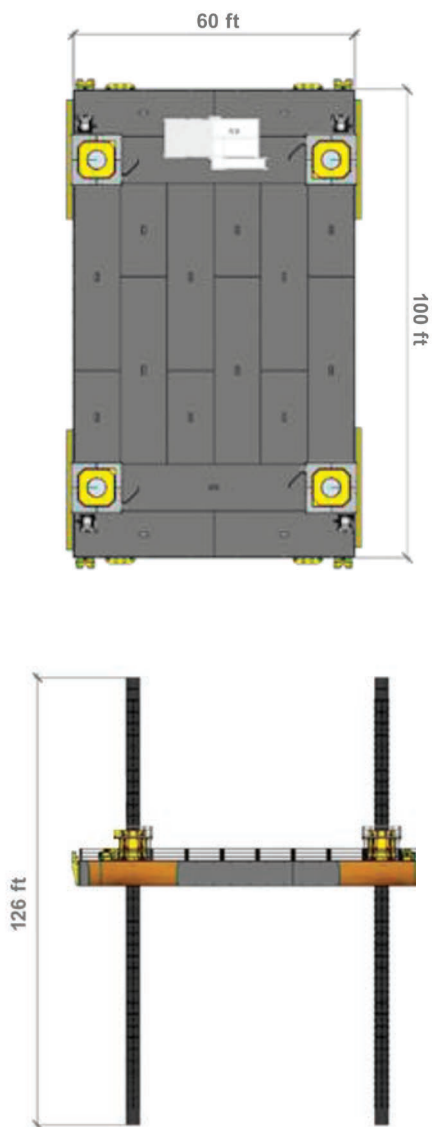
The modular MES-C7 Self-Elevating Platform is the ideal jackup platform for port and nearshore marine works. The design provides maximum uptime for construction and maintenance of terminals, jetties, ports, breakwaters, bridges, land-to-marine outfalls of cable or pipelines, and offshore facilities.

Offering a 440 US ton variable deck load capacity and an unparalleled 3,070 lb/ft² deck strength, the MES-C7 is the platform of choice for heavy duty marine construction works. It provides a large 5,600 ft² free deck space. Without obstructions on deck, the deck layout can be fully tailored to client's mission equipment and operating method. Depending on soil penetration and waves, the platform can operate in water depths up to 100 ft, with increases possible in moderate environment.

Safe and efficient lifting, lowering and (re)positioning of the platform is enabled through the central or local controlled jacking system and 4-point mooring system. Redundancy is provided by two independent hydraulic pump sets and manual control of crucial platform functions.

Maximizing Workability

With highly qualified and specialized in-house engineers, Poseidon Jackup offers various engineering services to guide and support clients on operational and environmental matters when using the platform. Poseidon Jackup engineers are available in all stages of your project, from tendering, project preparation, and throughout the entire execution phase.



GENERAL

Type	MES-C7 Modular Self-Elevating Platform
Class (Optional)	RINA

DIMENSIONS

Length	100 ft
Breadth	60 ft
Depth	7 ft
Free Deck Area	5,600 ft ²

LOADS

Variable Deck Load	440 US Tons (Short Tons)
Deck Strength	3,070 lb/ft ²

JACKING SYSTEM

Jacking Type	Hydraulic, Mechanical Engaged
Jacking Speed	39.4 ft per hr (Approx. 8 inches per minute)
Jacking Stroke	4 ft
Jacking Capacity	330 US Ton per Leg
Power	2x 122 HP Hydraulic Pump Sets

SPUD LEGS

Leg Length	126 ft extendable
Free Length Below Hull	105 ft
Leg Diameter	48"

OPERATIONAL CONDITIONS

Maximum Wave Height H_{lmax}	10 ft*
Wind Speed Max	30 MPH
Current	2 Knots

SURVIVAL CONDITIONS

Maximum Wave Height	16 ft*
Wind Speed	75 MPH
Current	2 Knots

* Indicated values will vary pending actual site and payload conditions.



Configuration

The platform consists of a number of standardized floating modules coupled together through a male / female connection system. The platform is supported by four spud legs in heavy duty spud wells. The hydraulic power unit with control cabin on top is located on the platform, with actual location on the platform being flexible.



Modular Design

All platform components are modular and easily transportable. Due to the modular design, overall dimensions and spud legs length can be adapted to customer needs.

Jacking System

The jacking mechanism consists of two hydraulically operated crossheads per spud well, to lock and unlock the spud for vertical movement. Vertical movement is accomplished by four hydraulic heavy duty cylinders with a stroke of 4 ft, working on an operating pressure up to 3,625 PSI. Operational jacking speeds are approximately 8 inches per minute.

The four spud wells are powered by a hydraulic power pack for simultaneously lifting and lowering the spud legs through its seating. The powerpack is built in a 20 ft container approved for the offshore environment.



The powerpack consist of two electric driven hydraulic pumps that need to be powered by shore power or separate generator on deck. The double execution also guarantees redundancy in case of emergency. The system is operated from a central control system with complete remote PLC control of the jacking operation. For safety reasons and as back-up, full manual and local control at the spud wells is also possible.

Potential Options Include

- Spud Cans
- 4-Point Mooring System
- Leg Extensions
- Boat Landing
- Spud Leg Jetting System
- IACS Classification

COFFERDAMS

Portadam's temporary proprietary cofferdam system, the Portadam®, is one of the world's most advanced portable water diversion solutions. Since it is deployed as a free-standing structure without penetrating the ground, it does not cause environmental harm.

KEY CHARACTERISTICS

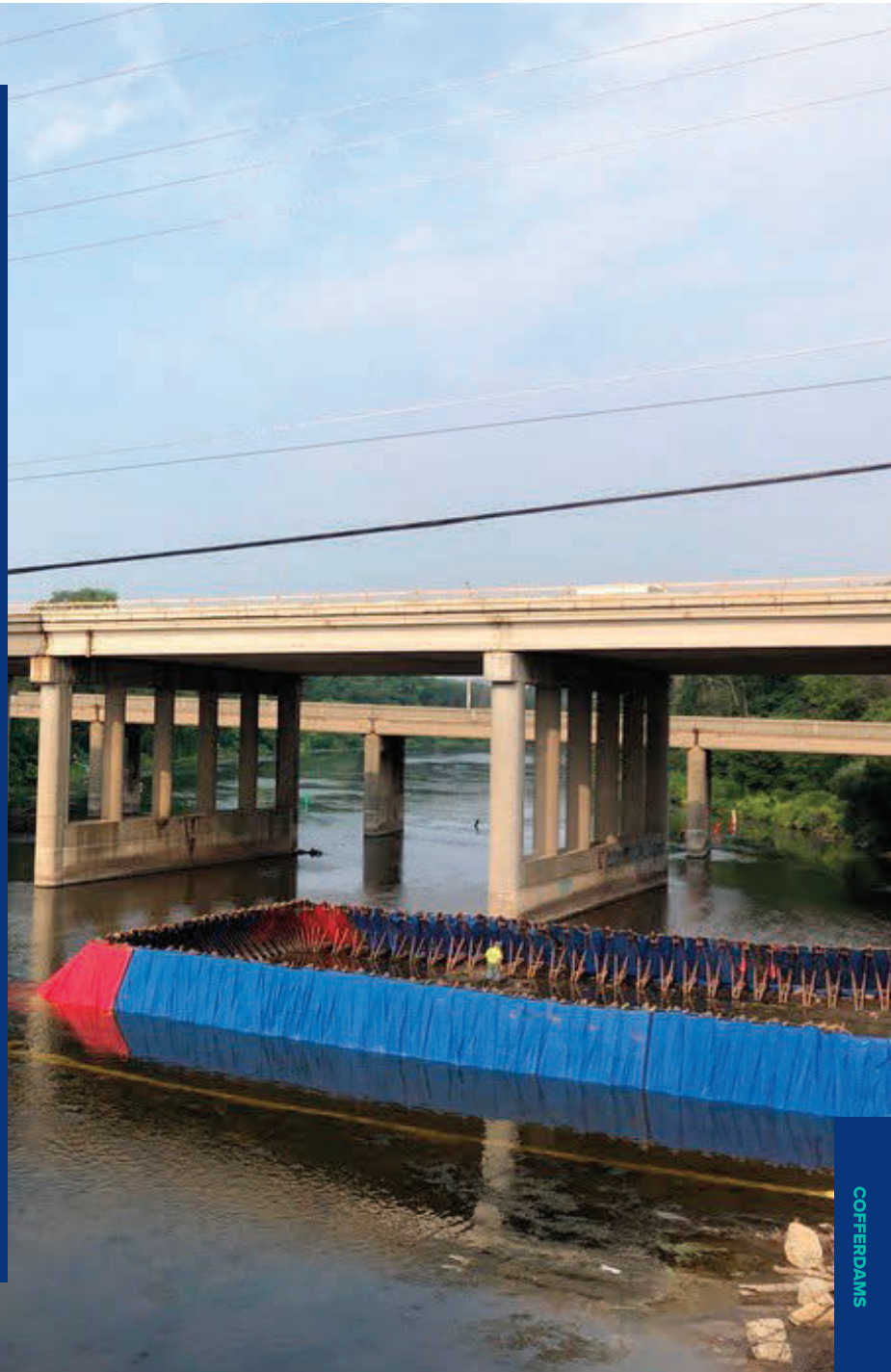
- Cost-effective
- Scheduling Advantages
- Budget/Cost Savings
- Reusable
- Engineered
- Eco-Friendly
- No Ground Penetration

BENEFITS OF THE PORTADAM® COFFERDAM:

- A Cost-Effective, Eco-Friendly Alternative to Traditional Sandbags and Sheet Piling
- A Proprietary, Impenetrable Wall Withstanding Flowing Water
- A Temporary Structure Consisting of Ready-to-Install Free-Standing Sections, Which Can Be Placed in Any Configuration
- A Proprietary Design Engineered to Ensure Performance Even in the Most Challenging Conditions

APPLICATIONS FOR TEMPORARY COFFERDAMS

- Bridges and Dams
- Pipeline Crossings
- Boat Ramps
- Canals
- Sheet Pile Wraps
- Shoreline Restoration/Stabilization



LINE CARD

A-

Air Winches
Alloy Chain Slings
Anchor Chain
Anchors
Anchor Shackles

B-

Ball Bearings Swivels
Barge Pusher
Barge Winches
Blocks
Boat Lifting Slings
Boom Pendant Assemblies
Buoys

C-

Cable Clips
Cable Tensiometer
Capstans
Cargo handling
Cargo Hoisting Blocks
Chain Hardware
Clips
Come-A-Long
Coupling Links
Crane Ramps
Cylinder Buoys

D-

D-Rings
Danforth Anchors
Diesel Mechanical Winches
Double Braid Nylon
Double Rig Trawl Blocks

E-

Electric Hydraulic Power Units
Electric Winches

Eye Hooks

F-

Fairleads
Ferrules
Fenders
Flexifloats
Flex-X Wire Rope
Foundry Hooks
Full Side Blocks

G-

Galvanized Mooring Lines
General Utility Winch
Grab Hooks
Grab Links
GabiQ Slings
Graded Welded Chain Grapples
Guide Blocks
Guide Sheaves
Hand Winches
Heavy-Duty Blocks
Heavy-Duty Winches
Hooks
Horizontal Guide Sheaves
Hydraulic Power Units

I-J-K

Ingersoll-Rand Winches
Jet Pumps
Knockdown Blocks

L-

Lantec Winches
Lashing Chain & Wire Rope
Lever Chain Hoist
Lifting Clamps
Line Spooler
Load Cells

Load Levelling Devices

LWT Anchors

M-

Manilla Rope
Manual Barge Winch
Master Links
Mooring Systems
Multi-Part Body Wire Rope Slings

N-O-

Nylon cordage
Open Sockets
Overhaul Balls

P-

Peg Buoys
Phillystrand Working Rope
Pike Poles
Pneumatic & Foam-Filled Fenders
Pneumatic Winches
Polyester Web Slings
Polypropylene Rope
Poseidon Floats
Proof Coil Chain
Pullmaster Hydraulic Winches

R-

Rafting Dogs
Release Hooks
Rotations Resistant Wire Rope
Rope Slings

S-

Safety Hooks
Sectional Barges
Shackles
Sheaves
Sling Hooks
Slingmax Rigging Products

Slings

Slip Hooks
Snatch Blocks
Sockets
Sorting Hooks
Spreader Beams
Spudwells
Stainless Steel Aircraft Cable
Stern Rollers
Stockless Anchors
Stud Link chain
Swivels

T-

Thern Products
Thimbles
Tommy Moore Blocks
Tow Lines
Tow Winches
Turnbuckles
TwinPath Slings

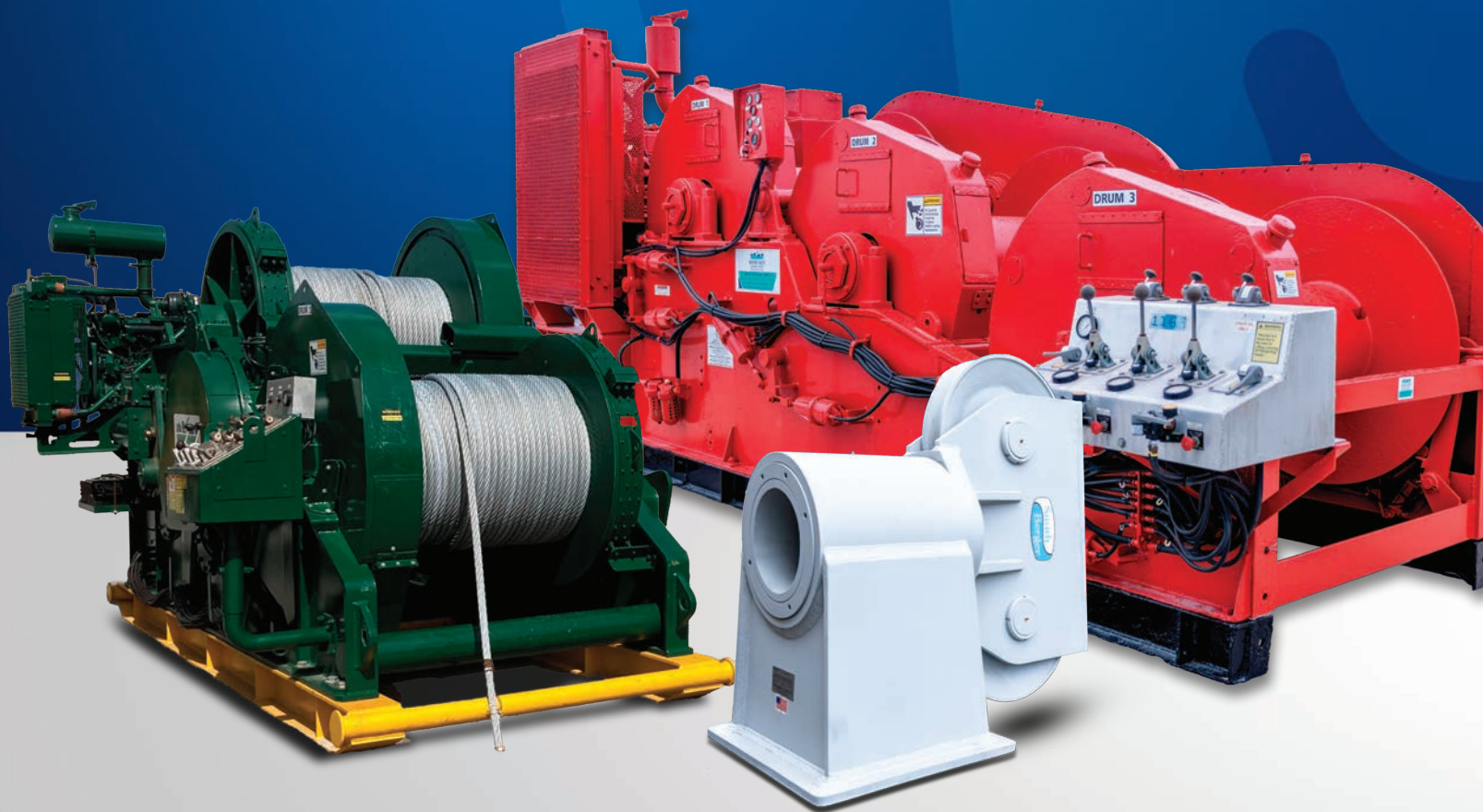
U-V-

Used Rental Winches
Utility Blocks
Vertical Guide Sheaves

W-

Web Slings
Wedge Sockets
Weld-On Hooks
Welded Chain
Winches
Winch Parts
Wirelock
Wire Rope
Workboat Anchors
Working Ropes

“IT’S WHO WE ARE.
IT’S WHAT WE DO.”



MarineEquipmentSolutions.com

800.227.7920 | info@MarineEquipmentSolutions.com | 415 S. Cloverdale St., Seattle, WA 98108